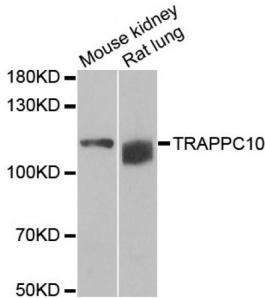
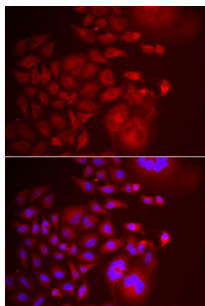


Trafficking Protein Particle Complex Subunit 10 (TRAPPC10) Antibody

Catalogue No.: abx005199



Western blot analysis of extracts of various cell lines, using TRAPPC10 antibody (abx005199) at 1/1000 dilution.



Immunofluorescence analysis of U2OS cells using TRAPPC10 antibody (abx005199). Blue: DAPI for nuclear staining.

TRAPPC10 Antibody is a Rabbit Polyclonal antibody against TRAPPC10. The protein encoded by this gene is a transmembrane protein found in the cis-Golgi complex. The encoded protein is part of the multisubunit transport protein particle (TRAPP) complex and may be involved in vesicular transport from the endoplasmic reticulum to the Golgi. Mutations in this gene could be responsible for the Unverricht-Lundborg type of progressive myoclonus epilepsy, or for autoimmune polyglandular disease type 1.

Target: TRAPPC10

Reactivity: Human, Mouse, Rat

Host: Rabbit

Clonality: Polyclonal

Tested Applications: WB, IF/ICC

Recommended dilutions: WB: 1/500 - 1/2000, IF/ICC: 1/50 - 1/100. Optimal dilutions/concentrations should be determined by the end user.

Immunogen: Recombinant protein of human TRAPPC10.

Purification: Affinity purified.

Form: Liquid

Abbexa Ltd, Innovation Centre, Cambridge Science Park, Cambridge, CB4 0EY, UK
Telephone: +44 (0) 1223 755950 - Fax: +44 (0) 1223 755951 - E-Mail: info@abbexa.com

Isotype:	IgG
Conjugation:	Unconjugated
Storage:	Aliquot and store at -20 °C. Avoid repeated freeze/thaw cycles.
Molecular Weight:	Calculated MW: 32 kDa/142 kDa Observed MW: 112 kDa
Swiss Prot:	P48553
GeneID:	7109
Gene Symbol:	TRAPPC10
Concentration:	> 1 mg/ml
Buffer:	PBS, pH 7.3, 0.02% sodium azide, 50% glycerol.
Note:	This product is for research use only.