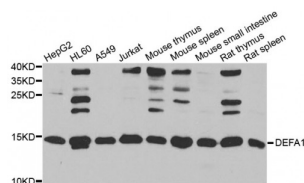


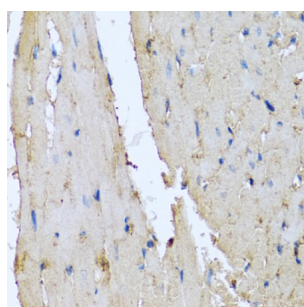
Abbexa Ltd, Innovation Centre, Cambridge Science Park, Cambridge, CB4 0EY, UK  
Telephone: +44 (0) 1223 755950 - Fax: +44 (0) 1223 755951 - E-Mail: [info@abbexa.com](mailto:info@abbexa.com)

## Defensin Alpha 1, Neutrophil (DEFA1) Antibody

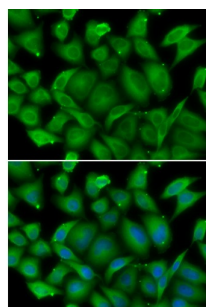
Catalogue No.: abx005247



Western blot analysis of extracts of various cell lines, using DEFA1 antibody (abx005247) at 1/1000 dilution.



Immunohistochemistry of paraffin-embedded rat heart using DEFA1 antibody (abx005247) at dilution of 1/100 (40x lens).



Immunofluorescence analysis of HeLa cells using DEFA1 antibody (abx005247). Blue: DAPI for nuclear staining.

DEFA1 Antibody is a Rabbit Polyclonal antibody against DEFA1. Defensins are a family of antimicrobial and cytotoxic peptides thought to be involved in host defense. They are abundant in the granules of neutrophils and also found in the epithelia of mucosal surfaces such as those of the intestine, respiratory tract, urinary tract, and vagina. Members of the defensin family are highly similar in protein sequence and distinguished by a conserved cysteine motif. The protein encoded by this gene, defensin, alpha 1, is found in the microbicidal granules of neutrophils and likely plays a role in phagocyte-mediated host defense. Several alpha defensin genes are clustered on chromosome 8. This gene differs from defensin, alpha 3 by only one amino acid. This gene and the gene encoding defensin, alpha 3 are both subject to copy number variation.

<b>Target:</b>	DEFA1
<b>Reactivity:</b>	Human, Mouse, Rat
<b>Host:</b>	Rabbit
<b>Clonality:</b>	Polyclonal

Abbexa Ltd, Innovation Centre, Cambridge Science Park, Cambridge, CB4 0EY, UK  
Telephone: +44 (0) 1223 755950 - Fax: +44 (0) 1223 755951 - E-Mail: [info@abbexa.com](mailto:info@abbexa.com)

**Tested Applications:** WB, IHC, IF/ICC

**Recommended dilutions:** WB: 1/500 - 1/2000, IHC: 1/50 - 1/100, IF/ICC: 1/50 - 1/100. Optimal dilutions/concentrations should be determined by the end user.

**Immunogen:** Recombinant protein of human DEFA1.

**Purification:** Affinity purified.

**Form:** Liquid

**Isotype:** IgG

**Conjugation:** Unconjugated

**Storage:** Aliquot and store at -20 °C. Avoid repeated freeze/thaw cycles.

**Molecular Weight:** Calculated MW: 10 kDa  
Observed MW: 15 kDa

**Swiss Prot:** [P59665](#)

**GeneID:** [1667](#)

**Gene Symbol:** DEFA1

**Concentration:** > 1 mg/ml

**Buffer:** PBS, pH 7.3, 0.02% sodium azide, 50% glycerol.

**Note:** This product is for research use only.