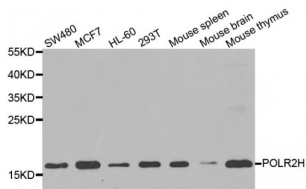


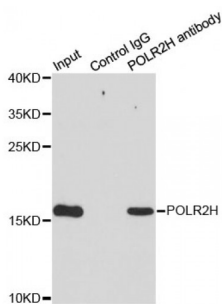
Abbexa Ltd, Innovation Centre, Cambridge Science Park, Cambridge, CB4 0EY, UK
 Telephone: +44 (0) 1223 755950 - Fax: +44 (0) 1223 755951 - E-Mail: info@abbexa.com

RNA Polymerase II Subunit H (POLR2H) Antibody

Catalogue No.: abx005271



Western blot analysis of extracts of various cell lines, using POLR2H antibody (abx005271) at 1/1000 dilution.



Immunoprecipitation analysis of 200 µg extracts of MCF7 cells using 1 µg POLR2H antibody (abx005271). Western blot was performed from the immunoprecipitate using POLR2H antibody (abx005271) at a dilution of 1/1000.

POLR2H Antibody is a Rabbit Polyclonal antibody against POLR2H. The three eukaryotic RNA polymerases are complex multisubunit enzymes that play a central role in the transcription of nuclear genes. This gene encodes an essential and highly conserved subunit of RNA polymerase II that is shared by the other two eukaryotic DNA-directed RNA polymerases, I and III. Alternative splicing results in multiple transcript variants of this gene.

Target: POLR2H

Reactivity: Human, Mouse, Rat

Host: Rabbit

Clonality: Polyclonal

Tested Applications: WB, IP

Recommended dilutions: WB: 1/500 - 1/2000, IP: 1/50 - 1/200. Optimal dilutions/concentrations should be determined by the end user.

Immunogen: Recombinant protein of human POLR2H.

Purification: Affinity purified.

Form: Liquid

Abbexa Ltd, Innovation Centre, Cambridge Science Park, Cambridge, CB4 0EY, UK
Telephone: +44 (0) 1223 755950 - Fax: +44 (0) 1223 755951 - E-Mail: info@abbexa.com

Isotype:	IgG
Conjugation:	Unconjugated
Storage:	Aliquot and store at -20 °C. Avoid repeated freeze/thaw cycles.
Molecular Weight:	Calculated MW: 9 kDa/12 kDa/13 kDa/17 kDa/19 kDa Observed MW: 17 kDa
Swiss Prot:	P52434
GeneID:	5437
Gene Symbol:	POLR2H
Concentration:	> 1 mg/ml
Buffer:	PBS, pH 7.3, 0.02% sodium azide, 50% glycerol.
Note:	This product is for research use only.