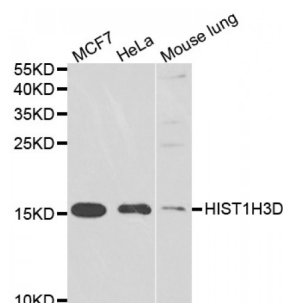


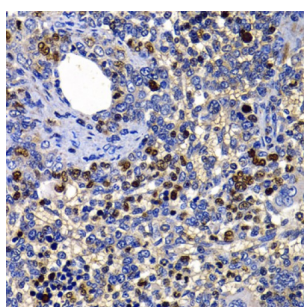
Abbexa Ltd, Innovation Centre, Cambridge Science Park, Cambridge, CB4 0EY, UK
Telephone: +44 (0) 1223 755950 - Fax: +44 (0) 1223 755951 - E-Mail: info@abbexa.com

Histone H3/d (HIST1H3D) Antibody

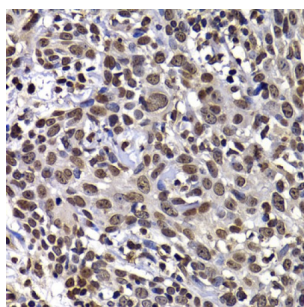
Catalogue No.: abx005311



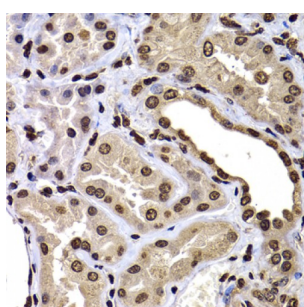
Western blot analysis of extracts of various cell lines, using HIST1H3D antibody (abx005311) at 1/1000 dilution.



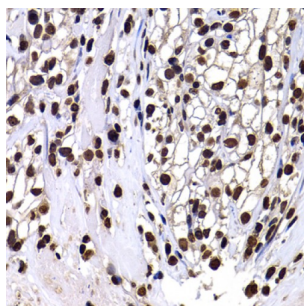
Immunohistochemistry of paraffin-embedded rat spleen using HIST1H3D antibody (abx005311) at dilution of 1/100 (40x lens).



Immunohistochemistry of paraffin-embedded human well-differentiated squamous skin carcinoma using HIST1H3D antibody (abx005311) at dilution of 1/100 (40x lens).

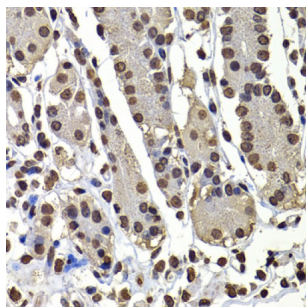


Immunohistochemistry of paraffin-embedded human kidney using HIST1H3D antibody (abx005311) at dilution of 1/100 (40x lens).

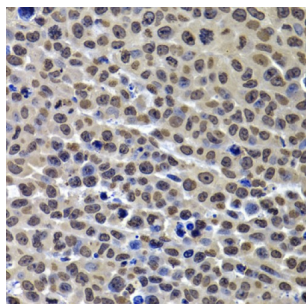


Immunohistochemistry of paraffin-embedded human kidney cancer using HIST1H3D antibody (abx005311) at dilution of 1/100 (40x lens).

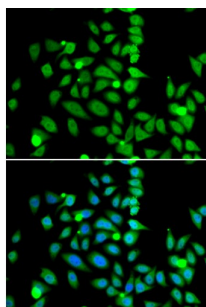
Abbexa Ltd, Innovation Centre, Cambridge Science Park, Cambridge, CB4 0EY, UK
Telephone: +44 (0) 1223 755950 - Fax: +44 (0) 1223 755951 - E-Mail: info@abbexa.com



Immunohistochemistry of paraffin-embedded human stomach using HIST1H3D antibody (abx005311) at dilution of 1/100 (40x lens).



Immunohistochemistry of paraffin-embedded mouse cancer using HIST1H3D antibody (abx005311) at dilution of 1/100 (40x lens).



Immunofluorescence analysis of U2OS cells using HIST1H3D antibody (abx005311). Blue: DAPI for nuclear staining.

HIST1H3D Antibody is a Rabbit Polyclonal antibody against HIST1H3D. Histones are basic nuclear proteins that are responsible for the nucleosome structure of the chromosomal fiber in eukaryotes. Two molecules of each of the four core histones (H2A, H2B, H3, and H4) form an octamer, around which approximately 146 bp of DNA is wrapped in repeating units, called nucleosomes. The linker histone, H1, interacts with linker DNA between nucleosomes and functions in the compaction of chromatin into higher order structures. This gene is intronless and encodes a member of the histone H3 family. Transcripts from this gene lack polyA tails but instead contain a palindromic termination element. This gene is found in the large histone gene cluster on chromosome 6.

Target:	HIST1H3D
Reactivity:	Human, Mouse, Rat
Host:	Rabbit
Clonality:	Polyclonal
Tested Applications:	WB, IHC, IF/ICC

Abbexa Ltd, Innovation Centre, Cambridge Science Park, Cambridge, CB4 0EY, UK
Telephone: +44 (0) 1223 755950 - Fax: +44 (0) 1223 755951 - E-Mail: info@abbexa.com

Recommended dilutions: WB: 1/500 - 1/2000, IHC: 1/50 - 1/200, IF/ICC: 1/50 - 1/100. Optimal dilutions/concentrations should be determined by the end user.

Immunogen: Recombinant protein of human HIST1H3D.

Purification: Affinity purified.

Form: Liquid

Isotype: IgG

Conjugation: Unconjugated

Storage: Aliquot and store at -20 °C. Avoid repeated freeze/thaw cycles.

Molecular Weight: Calculated MW: 15 kDa
Observed MW: 15 kDa

Swiss Prot: [P68431](#)

GeneID: [8351](#)

Gene Symbol: HIST1H3D

Concentration: > 1 mg/ml

Buffer: PBS, pH 7.3, 0.02% sodium azide, 50% glycerol.

Note: This product is for research use only.