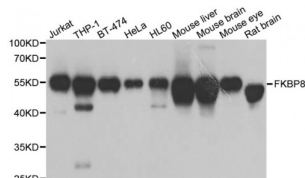


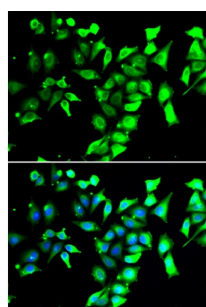
Abbexa Ltd, Innovation Centre, Cambridge Science Park, Cambridge, CB4 0EY, UK
Telephone: +44 (0) 1223 755950 - Fax: +44 (0) 1223 755951 - E-Mail: info@abbexa.com

Peptidyl-Prolyl Cis-Trans Isomerase FKBP8 (FKBP8) Antibody

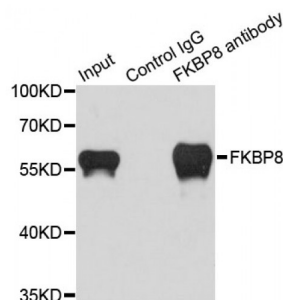
Catalogue No.: abx005356



Western blot analysis of extracts of various cell lines, using FKBP8 antibody (abx005356) at 1/1000 dilution.



Immunofluorescence analysis of A549 cells using FKBP8 antibody (abx005356). Blue: DAPI for nuclear staining.



Immunoprecipitation analysis of 200 µg extracts of HeLa cells using 1 µg FKBP8 antibody (abx005356). Western blot was performed from the immunoprecipitate using FKBP8 antibody (abx005356) at a dilution of 1/1000.

FKBP8 Antibody is a Rabbit Polyclonal antibody against FKBP8. The protein encoded by this gene is a member of the immunophilin protein family, which play a role in immunoregulation and basic cellular processes involving protein folding and trafficking. Unlike the other members of the family, this encoded protein does not seem to have PPIase/rotamase activity. It may have a role in neurons associated with memory function.

Target:	FKBP8
Reactivity:	Human, Mouse, Rat
Host:	Rabbit
Clonality:	Polyclonal
Tested Applications:	WB, IF/ICC, IP

Abbexa Ltd, Innovation Centre, Cambridge Science Park, Cambridge, CB4 0EY, UK
Telephone: +44 (0) 1223 755950 - Fax: +44 (0) 1223 755951 - E-Mail: info@abbexa.com

Recommended dilutions: WB: 1/500 - 1/2000, IF/ICC: 1/50 - 1/100, IP: 1/50 - 1/200. Optimal dilutions/concentrations should be determined by the end user.

Immunogen: Recombinant protein of human FKBP8.

Purification: Affinity purified.

Form: Liquid

Isotype: IgG

Conjugation: Unconjugated

Storage: Aliquot and store at -20 °C. Avoid repeated freeze/thaw cycles.

Molecular Weight: Calculated MW: 27 kDa/44 kDa
Observed MW: 55 kDa

Swiss Prot: [Q14318](#)

GeneID: [23770](#)

Gene Symbol: FKBP8

Concentration: > 1 mg/ml

Buffer: PBS, pH 7.3, 0.02% sodium azide, 50% glycerol.

Note: This product is for research use only.