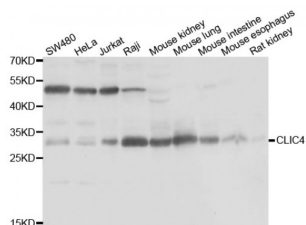


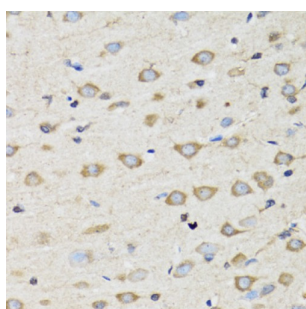
Abbexa Ltd, Innovation Centre, Cambridge Science Park, Cambridge, CB4 0EY, UK
 Telephone: +44 (0) 1223 755950 - Fax: +44 (0) 1223 755951 - E-Mail: info@abbexa.com

Chloride Intracellular Channel Protein 4 (CLIC4) Antibody

Catalogue No.: abx005358



Western blot analysis of extracts of various cell lines, using CLIC4 antibody (abx005358) at 1/1000 dilution.



Immunohistochemistry of paraffin-embedded rat brain using CLIC4 antibody (abx005358) at dilution of 1/100 (40x lens).

CLIC4 Antibody is a Rabbit Polyclonal antibody against CLIC4. Chloride channels are a diverse group of proteins that regulate fundamental cellular processes including stabilization of cell membrane potential, transepithelial transport, maintenance of intracellular pH, and regulation of cell volume. Chloride intracellular channel 4 (CLIC4) protein, encoded by the CLIC4 gene, is a member of the p64 family; the gene is expressed in many tissues and exhibits a intracellular vesicular pattern in Panc-1 cells (pancreatic cancer cells).

Target: CLIC4

Reactivity: Human, Mouse, Rat

Host: Rabbit

Clonality: Polyclonal

Tested Applications: WB, IHC, IF/ICC

Recommended dilutions: WB: 1/500 - 1/2000, IHC: 1/50 - 1/200, IF/ICC: 1/50 - 1/100. Optimal dilutions/concentrations should be determined by the end user.

Immunogen: Recombinant protein of human CLIC4.

Purification: Affinity purified.

Form: Liquid

Abbexa Ltd, Innovation Centre, Cambridge Science Park, Cambridge, CB4 0EY, UK
Telephone: +44 (0) 1223 755950 - Fax: +44 (0) 1223 755951 - E-Mail: info@abbexa.com

Isotype:	IgG
Conjugation:	Unconjugated
Storage:	Aliquot and store at -20 °C. Avoid repeated freeze/thaw cycles.
Molecular Weight:	Calculated MW: 28 kDa Observed MW: 29 kDa
Swiss Prot:	Q9Y696
GeneID:	25932
Gene Symbol:	CLIC4
Concentration:	> 1 mg/ml
Buffer:	PBS, pH 7.3, 0.02% sodium azide, 50% glycerol.
Note:	This product is for research use only.