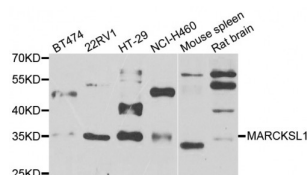


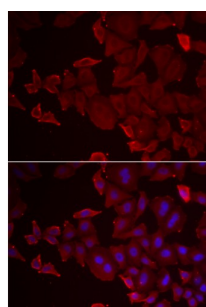
Abbexa Ltd, Innovation Centre, Cambridge Science Park, Cambridge, CB4 0EY, UK
Telephone: +44 (0) 1223 755950 - Fax: +44 (0) 1223 755951 - E-Mail: info@abbexa.com

MARCKS-Like Protein 1 (MARCKSL1) Antibody

Catalogue No.: abx005386



Western blot analysis of extracts of various cell lines, using MARCKSL1 antibody (abx005386) at 1/1000 dilution.



Immunofluorescence analysis of U2OS cells using MARCKSL1 antibody (abx005386). Blue: DAPI for nuclear staining.

MARCKSL1 Antibody is a Rabbit Polyclonal antibody against MARCKSL1. This gene encodes a member of the myristoylated alanine-rich C-kinase substrate (MARCKS) family. Members of this family play a role in cytoskeletal regulation, protein kinase C signaling and calmodulin signaling. The encoded protein affects the formation of adherens junction. Alternative splicing results in multiple transcript variants. Pseudogenes of this gene are located on the long arm of chromosomes 6 and 10.

Target: MARCKSL1

Reactivity: Human, Mouse, Rat

Host: Rabbit

Clonality: Polyclonal

Tested Applications: WB, IF/ICC

Recommended dilutions: WB: 1/500 - 1/2000, IF/ICC: 1/50 - 1/100. Optimal dilutions/concentrations should be determined by the end user.

Immunogen: Recombinant protein of human MARCKSL1.

Purification: Affinity purified.

Form: Liquid

Abbexa Ltd, Innovation Centre, Cambridge Science Park, Cambridge, CB4 0EY, UK
Telephone: +44 (0) 1223 755950 - Fax: +44 (0) 1223 755951 - E-Mail: info@abbexa.com

Isotype:	IgG
Conjugation:	Unconjugated
Storage:	Aliquot and store at -20 °C. Avoid repeated freeze/thaw cycles.
Molecular Weight:	Calculated MW: 19 kDa Observed MW: 35 kDa
Swiss Prot:	P49006
GeneID:	65108
Gene Symbol:	MARCKSL1
Concentration:	> 1 mg/ml
Buffer:	PBS, pH 7.3, 0.02% sodium azide, 50% glycerol.
Note:	This product is for research use only.