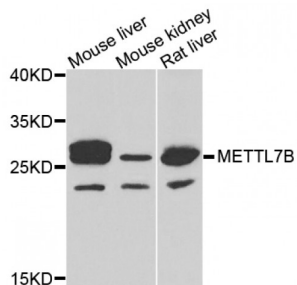


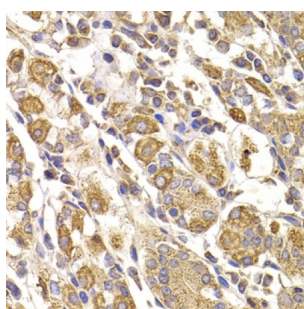
Abbexa Ltd, Innovation Centre, Cambridge Science Park, Cambridge, CB4 0EY, UK
 Telephone: +44 (0) 1223 755950 - Fax: +44 (0) 1223 755951 - E-Mail: info@abbexa.com

Methyltransferase Like Protein 7B (METTL7B) Antibody

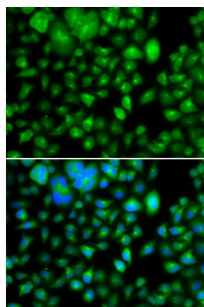
Catalogue No.: abx005434



Western blot analysis of extracts of various cell lines, using METTL7B antibody (abx005434) at 1/1000 dilution.



Immunohistochemistry of paraffin-embedded human stomach using METTL7B antibody (abx005434) at dilution of 1/100 (40x lens).



Immunofluorescence analysis of A549 cells using METTL7B antibody (abx005434). Blue: DAPI for nuclear staining.

METTL7B Antibody is a Rabbit Polyclonal antibody against METTL7B.

Target: METTL7B

Reactivity: Human, Mouse, Rat

Host: Rabbit

Clonality: Polyclonal

Tested Applications: WB, IHC, IF/ICC

Recommended dilutions: WB: 1/500 - 1/2000, IHC: 1/50 - 1/200, IF/ICC: 1/50 - 1/100. Optimal dilutions/concentrations should be determined by the end user.

Immunogen: Recombinant protein of human METTL7B.

Abbexa Ltd, Innovation Centre, Cambridge Science Park, Cambridge, CB4 0EY, UK
Telephone: +44 (0) 1223 755950 - Fax: +44 (0) 1223 755951 - E-Mail: info@abbexa.com

Purification:	Affinity purified.
Form:	Liquid
Isotype:	IgG
Conjugation:	Unconjugated
Storage:	Aliquot and store at -20 °C. Avoid repeated freeze/thaw cycles.
Molecular Weight:	Calculated MW: 27 kDa Observed MW: 28 kDa
Swiss Prot:	Q6UX53
GeneID:	196410
Gene Symbol:	METTL7B
Concentration:	> 1 mg/ml
Buffer:	PBS, pH 7.3, 0.02% sodium azide, 50% glycerol.
Note:	This product is for research use only.