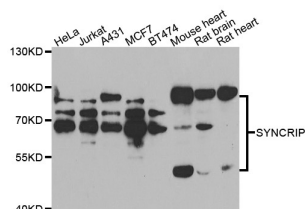


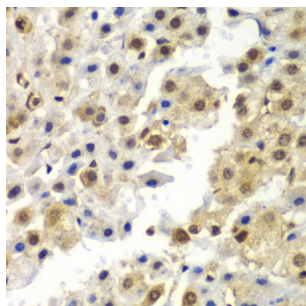
Abbexa Ltd, Innovation Centre, Cambridge Science Park, Cambridge, CB4 0EY, UK  
Telephone: +44 (0) 1223 755950 - Fax: +44 (0) 1223 755951 - E-Mail: [info@abbexa.com](mailto:info@abbexa.com)

## Synaptotagmin Binding Cytoplasmic RNA Interacting Protein (SYNCRIP) Antibody

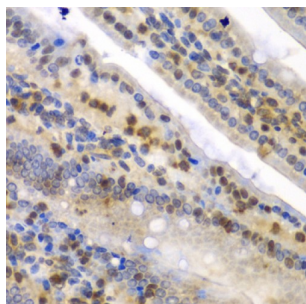
Catalogue No.: abx005450



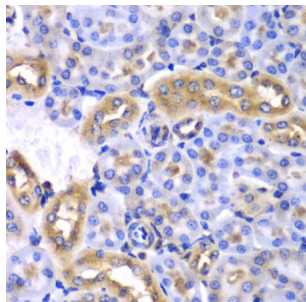
Western blot analysis of extracts of various cell lines, using SYNCRIP antibody (abx005450) at 1/1000 dilution.



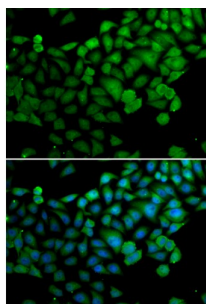
Immunohistochemistry of paraffin-embedded human liver cancer using SYNCRIP antibody (abx005450) at dilution of 1/100 (40x lens).



Immunohistochemistry of paraffin-embedded mouse Intestine using SYNCRIP antibody (abx005450) at dilution of 1/100 (40x lens).



Immunohistochemistry of paraffin-embedded mouse kidney using SYNCRIP antibody (abx005450) at dilution of 1/100 (40x lens).



Immunofluorescence analysis of MCF-7 cells using SYNCRIP antibody (abx005450). Blue: DAPI for nuclear staining.

Abbexa Ltd, Innovation Centre, Cambridge Science Park, Cambridge, CB4 0EY, UK  
Telephone: +44 (0) 1223 755950 - Fax: +44 (0) 1223 755951 - E-Mail: [info@abbexa.com](mailto:info@abbexa.com)

SYNCRIP Antibody is a Rabbit Polyclonal antibody against SYNCRIP. This gene encodes a member of the cellular heterogeneous nuclear ribonucleoprotein (hnRNP) family. hnRNPs are RNA binding proteins that complex with heterogeneous nuclear RNA (hnRNA) and regulate alternative splicing, polyadenylation, and other aspects of mRNA metabolism and transport. The encoded protein plays a role in multiple aspects of mRNA maturation and is associated with several multiprotein complexes including the apoB RNA editing-complex and survival of motor neurons (SMN) complex. Alternatively spliced transcript variants encoding multiple isoforms have been observed for this gene, and a pseudogene of this gene is located on the short arm of chromosome 20.

**Target:** SYNCRIP

**Reactivity:** Human, Mouse, Rat

**Host:** Rabbit

**Clonality:** Polyclonal

**Tested Applications:** WB, IHC, IF/ICC

**Recommended dilutions:** WB: 1/500 - 1/2000, IHC: 1/50 - 1/200, IF/ICC: 1/50 - 1/200. Optimal dilutions/concentrations should be determined by the end user.

**Immunogen:** Recombinant protein of human SYNCRIP.

**Purification:** Affinity purified.

**Form:** Liquid

**Isotype:** IgG

**Conjugation:** Unconjugated

**Storage:** Aliquot and store at -20 °C. Avoid repeated freeze/thaw cycles.

**Molecular Weight:** Calculated MW: 46 kDa/58 kDa/62 kDa/65 kDa/69 kDa  
Observed MW: 55-100 kDa

**Swiss Prot:** [O60506](#)

**GeneID:** [10492](#)

**Gene Symbol:** SYNCRIP

**Concentration:** > 1 mg/ml

**Buffer:** PBS, pH 7.3, 0.02% sodium azide, 50% glycerol.

**Note:** This product is for research use only.