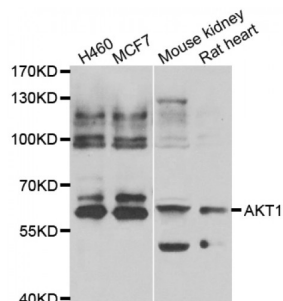


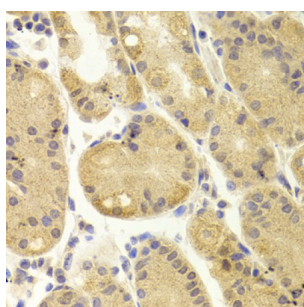
Abbexa Ltd, Innovation Centre, Cambridge Science Park, Cambridge, CB4 0EY, UK
Telephone: +44 (0) 1223 755950 - Fax: +44 (0) 1223 755951 - E-Mail: info@abbexa.com

RAC-Alpha Serine/threonine-Protein Kinase (AKT1) Antibody

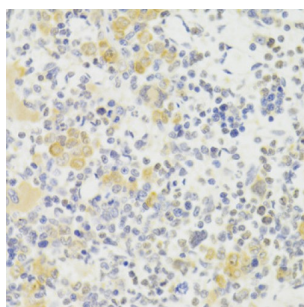
Catalogue No.: abx005477



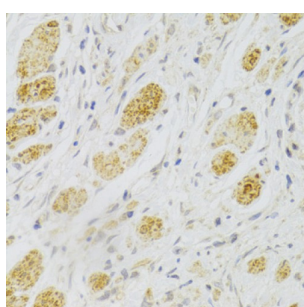
Western blot analysis of extracts of various cell lines, using AKT1 antibody (abx005477).



Immunohistochemistry of paraffin-embedded human stomach using AKT1 Antibody (abx005477) at dilution of 1/100 (40x lens).



Immunohistochemistry of paraffin-embedded rat spleen using AKT1 Antibody (abx005477) at dilution of 1/100 (40x lens).



Immunohistochemistry of paraffin-embedded human gastric cancer using AKT1 Antibody (abx005477) at dilution of 1/100 (40x lens).

AKT1 Antibody is a Rabbit Polyclonal antibody against AKT1. The serine-threonine protein kinase encoded by the AKT1 gene is catalytically inactive in serum-starved primary and immortalized fibroblasts. AKT1 and the related AKT2 are activated by platelet-derived growth factor. The activation is rapid and specific, and it is abrogated by mutations in the pleckstrin homology domain of AKT1. It was shown that the activation occurs through phosphatidylinositol 3-kinase. In the developing nervous system AKT is a critical mediator of growth factor-induced neuronal survival. Survival factors can suppress apoptosis in a transcription-independent manner by activating the serine/threonine kinase AKT1, which then phosphorylates and inactivates components of the apoptotic machinery. Mutations in this gene have been associated with the Proteus syndrome. Multiple alternatively spliced transcript variants have been found for this gene.

Abbexa Ltd, Innovation Centre, Cambridge Science Park, Cambridge, CB4 0EY, UK
Telephone: +44 (0) 1223 755950 - Fax: +44 (0) 1223 755951 - E-Mail: info@abbexa.com

Target:	AKT1
Reactivity:	Human, Mouse, Rat
Host:	Rabbit
Clonality:	Polyclonal
Tested Applications:	WB, IHC
Recommended dilutions:	WB: 1/500 - 1/2000, IHC: 1/50 - 1/100. Optimal dilutions/concentrations should be determined by the end user.
Immunogen:	A synthetic peptide of human AKT1.
Purification:	Affinity purified.
Form:	Liquid
Isotype:	IgG
Conjugation:	Unconjugated
Storage:	Aliquot and store at -20 °C. Avoid repeated freeze/thaw cycles.
Molecular Weight:	Calculated MW: 48 kDa/55 kDa Observed MW: 56 kDa
Swiss Prot:	P31749
GeneID:	207
Gene Symbol:	AKT1
Concentration:	> 1 mg/ml
Buffer:	PBS, pH 7.3, 0.02% sodium azide, 50% glycerol.
Note:	This product is for research use only.