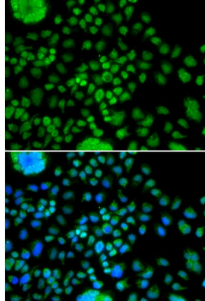


Protein Atonal Homolog 7 (ATOH7) Antibody

Catalogue No.: abx005480



Immunofluorescence analysis of MCF-7 cells using ATOH7 antibody (abx005480). Blue: DAPI for nuclear staining.

ATOH7 Antibody is a Rabbit Polyclonal antibody against ATOH7. This intronless gene encodes a member of the basic helix-loop-helix family of transcription factors, with similarity to *Drosophila atonal* gene that controls photoreceptor development. Studies in mice suggest that this gene plays a central role in retinal ganglion cell and optic nerve formation. Mutations in this gene are associated with nonsyndromic congenital retinal nonattachment.

Target:	ATOH7
Reactivity:	Human
Host:	Rabbit
Clonality:	Polyclonal
Tested Applications:	WB, IF/ICC
Recommended dilutions:	WB: 1/500 - 1/2000, IF/ICC: 1/50 - 1/100. Optimal dilutions/concentrations should be determined by the end user.
Immunogen:	Recombinant protein of human ATOH7.
Purification:	Affinity purified.
Form:	Liquid
Isotype:	IgG
Conjugation:	Unconjugated
Storage:	Aliquot and store at -20 °C. Avoid repeated freeze/thaw cycles.
Molecular Weight:	Calculated MW: 16 kDa Observed MW: Refer to figures

Abbexa Ltd, Innovation Centre, Cambridge Science Park, Cambridge, CB4 0EY, UK
Telephone: +44 (0) 1223 755950 - Fax: +44 (0) 1223 755951 - E-Mail: info@abbexa.com

Swiss Prot: [Q8N100](#)

GeneID: [220202](#)

Gene Symbol: ATOH7

Concentration: > 1 mg/ml

Buffer: PBS, pH 7.3, 0.02% sodium azide, 50% glycerol.

Note: This product is for research use only.