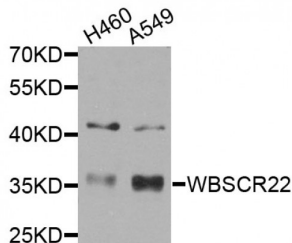


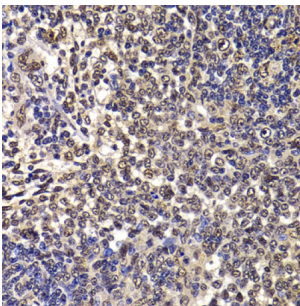
Abbexa Ltd, Innovation Centre, Cambridge Science Park, Cambridge, CB4 0EY, UK
 Telephone: +44 (0) 1223 755950 - Fax: +44 (0) 1223 755951 - E-Mail: info@abbexa.com

Williams-Beuren Syndrome Chromosomal Region 22 Protein (WBSCR22) Antibody

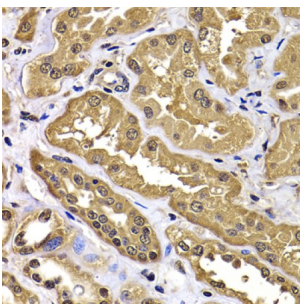
Catalogue No.: abx005524



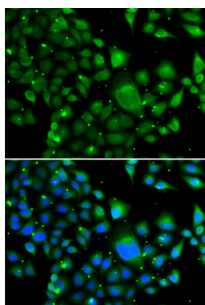
Western blot analysis of extracts of various cell lines, using WBSCR22 antibody (abx005524) at 1/1000 dilution.



Immunohistochemistry of paraffin-embedded rat spleen using WBSCR22 antibody (abx005524) at dilution of 1/100 (40x lens).



Immunohistochemistry of paraffin-embedded human kidney using WBSCR22 antibody (abx005524) at dilution of 1/100 (40x lens).



Immunofluorescence analysis of MCF-7 cells using WBSCR22 antibody (abx005524). Blue: DAPI for nuclear staining.

WBSCR22 Antibody is a Rabbit Polyclonal antibody against WBSCR22. This gene encodes a protein containing a nuclear localization signal and an S-adenosyl-L-methionine binding motif typical of methyltransferases, suggesting that the encoded protein may act on DNA methylation. This gene is deleted in Williams syndrome, a multisystem developmental disorder caused by the deletion of contiguous genes at 7q11.23. Alternatively spliced transcript variants have been found.

Target: WBSCR22

Abbexa Ltd, Innovation Centre, Cambridge Science Park, Cambridge, CB4 0EY, UK
Telephone: +44 (0) 1223 755950 - Fax: +44 (0) 1223 755951 - E-Mail: info@abbexa.com

Reactivity: Human, Rat

Host: Rabbit

Clonality: Polyclonal

Tested Applications: WB, IHC, IF/ICC

Recommended dilutions: WB: 1/500 - 1/2000, IHC: 1/50 - 1/200, IF/ICC: 1/50 - 1/100. Optimal dilutions/concentrations should be determined by the end user.

Immunogen: Recombinant protein of human WBSCR22.

Purification: Affinity purified.

Form: Liquid

Isotype: IgG

Conjugation: Unconjugated

Storage: Aliquot and store at -20 °C. Avoid repeated freeze/thaw cycles.

Molecular Weight: Calculated MW: 24 kDa/31 kDa/33 kDa
Observed MW: 36 kDa

Swiss Prot: [O43709](#)

GeneID: [114049](#)

Gene Symbol: WBSCR22

Concentration: > 1 mg/ml

Buffer: PBS, pH 7.3, 0.02% sodium azide, 50% glycerol.

Note: This product is for research use only.