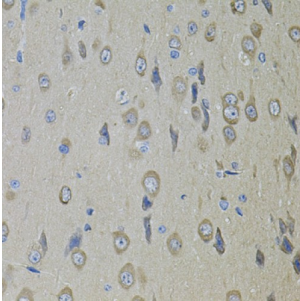


Abbexa Ltd, Innovation Centre, Cambridge Science Park, Cambridge, CB4 0EY, UK  
Telephone: +44 (0) 1223 755950 - Fax: +44 (0) 1223 755951 - E-Mail: [info@abbexa.com](mailto:info@abbexa.com)

## Smoothened Homolog (SMO) Antibody

Catalogue No.: abx005624



Immunohistochemistry of paraffin-embedded rat brain using SMO antibody (abx005624) (40x lens).

SMO Antibody is a Rabbit Polyclonal Antibody against SMO.

<b>Target:</b>	SMO
<b>Reactivity:</b>	Human, Rat
<b>Host:</b>	Rabbit
<b>Clonality:</b>	Polyclonal
<b>Tested Applications:</b>	WB, IHC
<b>Recommended dilutions:</b>	WB: 1/500 - 1/2000, IHC: 1/50 - 1/200. Optimal dilutions/concentrations should be determined by the end user.
<b>Purification:</b>	Affinity purified.
<b>Form:</b>	Liquid
<b>Isotype:</b>	IgG
<b>Conjugation:</b>	Unconjugated
<b>Storage:</b>	Aliquot and store at -20 °C. Avoid repeated freeze/thaw cycles.
<b>Molecular Weight:</b>	Calculated MW: 86 kDa Observed MW: Refer to Figures
<b>Swiss Prot:</b>	<a href="#">Q99835</a>
<b>GeneID:</b>	<a href="#">6608</a>
<b>Gene Symbol:</b>	SMO

Abbexa Ltd, Innovation Centre, Cambridge Science Park, Cambridge, CB4 0EY, UK  
Telephone: +44 (0) 1223 755950 - Fax: +44 (0) 1223 755951 - E-Mail: [info@abbexa.com](mailto:info@abbexa.com)

**Concentration:** > 1 mg/ml

**Buffer:** PBS, pH 7.3, 0.02% sodium azide, 50% glycerol.

**Note:** This product is for research use only.