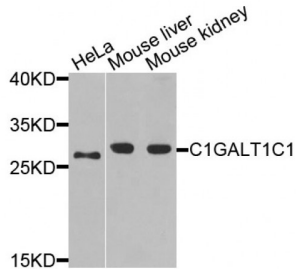


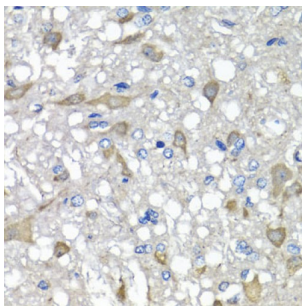
Abbexa Ltd, Innovation Centre, Cambridge Science Park, Cambridge, CB4 0EY, UK  
Telephone: +44 (0) 1223 755950 - Fax: +44 (0) 1223 755951 - E-Mail: info@abbexa.com

## C1GALT1-Specific Chaperone 1 (C1GALT1C1) Antibody

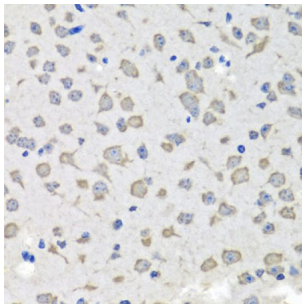
Catalogue No.: abx005637



Western blot analysis of extracts of various cell lines, using C1GALT1C1 antibody (abx005637) at 1/1000 dilution.



Immunohistochemistry of paraffin-embedded rat brain using C1GALT1C1 antibody (abx005637) at dilution of 1/100 (40x lens).



Immunohistochemistry of paraffin-embedded mouse brain using C1GALT1C1 antibody (abx005637) at dilution of 1/100 (40x lens).

C1GALT1C1 Antibody is a Rabbit Polyclonal Antibody against C1GALT1C1.

**Target:** C1GALT1C1

**Reactivity:** Human, Mouse, Rat

**Host:** Rabbit

**Clonality:** Polyclonal

**Tested Applications:** WB, IHC

**Recommended dilutions:** WB: 1/500 - 1/2000, IHC: 1/50 - 1/100. Optimal dilutions/concentrations should be determined by the end user.

**Purification:** Affinity purified.

Abbexa Ltd, Innovation Centre, Cambridge Science Park, Cambridge, CB4 0EY, UK  
Telephone: +44 (0) 1223 755950 - Fax: +44 (0) 1223 755951 - E-Mail: [info@abbexa.com](mailto:info@abbexa.com)

<b>Form:</b>	Liquid
<b>Isotype:</b>	IgG
<b>Conjugation:</b>	Unconjugated
<b>Storage:</b>	Aliquot and store at -20 °C. Avoid repeated freeze/thaw cycles.
<b>Molecular Weight:</b>	Calculated MW: 36 kDa Observed MW: 30 kDa
<b>Swiss Prot:</b>	<a href="#">Q96EU7</a>
<b>GeneID:</b>	<a href="#">29071</a>
<b>Gene Symbol:</b>	C1GALT1C1
<b>Concentration:</b>	> 1 mg/ml
<b>Buffer:</b>	PBS, pH 7.3, 0.02% sodium azide, 50% glycerol.
<b>Note:</b>	This product is for research use only.