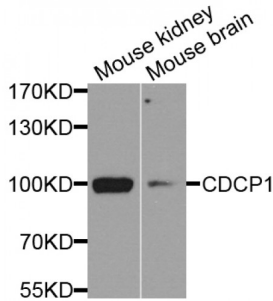


Abbexa Ltd, Innovation Centre, Cambridge Science Park, Cambridge, CB4 0EY, UK
Telephone: +44 (0) 1223 755950 - Fax: +44 (0) 1223 755951 - E-Mail: info@abbexa.com

CUB Domain Containing Protein 1 (CDCP1) Antibody

Catalogue No.: abx005767



Western blot analysis of extracts of various cell lines, using CDCP1 antibody (abx005767) at 1/1000 dilution.

CDCP1 Antibody is a Rabbit Polyclonal Antibody against CDCP1.

Target: CDCP1

Reactivity: Human, Mouse

Host: Rabbit

Clonality: Polyclonal

Tested Applications: WB

Recommended dilutions: WB: 1/500 - 1/2000. Optimal dilutions/concentrations should be determined by the end user.

Purification: Affinity purified.

Form: Liquid

Isotype: IgG

Conjugation: Unconjugated

Storage: Aliquot and store at -20 °C. Avoid repeated freeze/thaw cycles.

Molecular Weight: Calculated MW: 37 kDa/72 kDa/92 kDa
Observed MW: 100 kDa

Swiss Prot: [Q9H5V8](#)

GeneID: [64866](#)

Gene Symbol: CDCP1

Abbexa Ltd, Innovation Centre, Cambridge Science Park, Cambridge, CB4 0EY, UK
Telephone: +44 (0) 1223 755950 - Fax: +44 (0) 1223 755951 - E-Mail: info@abbexa.com

Concentration: > 1 mg/ml

Buffer: PBS, pH 7.3, 0.02% sodium azide, 50% glycerol.

Note: This product is for research use only.