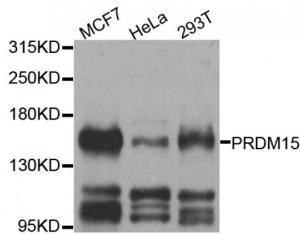


Abbexa Ltd, Innovation Centre, Cambridge Science Park, Cambridge, CB4 0EY, UK  
Telephone: +44 (0) 1223 755950 - Fax: +44 (0) 1223 755951 - E-Mail: info@abbexa.com

## PR/SET Domain 15 (PRDM15) Antibody

Catalogue No.: abx005813



Western blot analysis of extracts of various cell lines, using PRDM15 antibody (abx005813) at 1/1000 dilution.

PRDM15 Antibody is a Rabbit Polyclonal Antibody against PRDM15.

**Target:** PRDM15

**Reactivity:** Human

**Host:** Rabbit

**Clonality:** Polyclonal

**Tested Applications:** WB

**Recommended dilutions:** WB: 1/500 - 1/2000. Optimal dilutions/concentrations should be determined by the end user.

**Purification:** Affinity purified.

**Form:** Liquid

**Isotype:** IgG

**Conjugation:** Unconjugated

**Storage:** Aliquot and store at -20 °C. Avoid repeated freeze/thaw cycles.

**Molecular Weight:** Calculated MW: 57 kDa/62 kDa/133 kDa/135 kDa/169 kDa  
Observed MW: 169 kDa

**Swiss Prot:** [P57071](#)

**GeneID:** [63977](#)

**Gene Symbol:** PRDM15

Abbexa Ltd, Innovation Centre, Cambridge Science Park, Cambridge, CB4 0EY, UK  
Telephone: +44 (0) 1223 755950 - Fax: +44 (0) 1223 755951 - E-Mail: [info@abbexa.com](mailto:info@abbexa.com)

**Concentration:** > 1 mg/ml

**Buffer:** PBS, pH 7.3, 0.02% sodium azide, 50% glycerol.

**Note:** This product is for research use only.