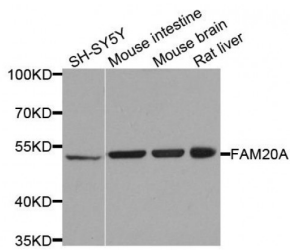


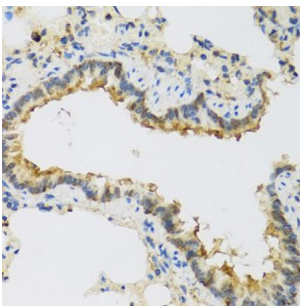
Abbexa Ltd, Innovation Centre, Cambridge Science Park, Cambridge, CB4 0EY, UK
 Telephone: +44 (0) 1223 755950 - Fax: +44 (0) 1223 755951 - E-Mail: info@abbexa.com

Family With Sequence Similarity 20, Member A (FAM20A) Antibody

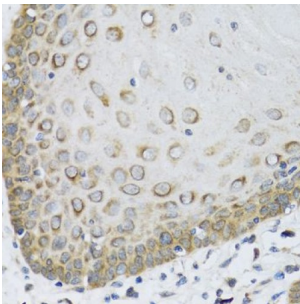
Catalogue No.: abx006166



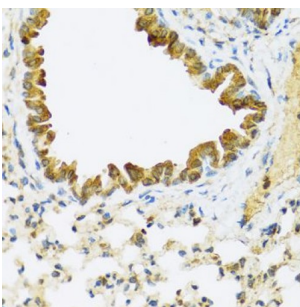
Western blot analysis of extracts of various cell lines, using FAM20A antibody (abx006166) at 1/1000 dilution.



Immunohistochemistry of paraffin-embedded rat lung using FAM20A antibody (abx006166) at dilution of 1/100 (40x lens).



Immunohistochemistry of paraffin-embedded human esophagus using FAM20A antibody (abx006166) at dilution of 1/100 (40x lens).



Immunohistochemistry of paraffin-embedded mouse lung using FAM20A antibody (abx006166) at dilution of 1/100 (40x lens).

FAM20A Antibody is a Rabbit Polyclonal Antibody against FAM20A.

Target: FAM20A

Reactivity: Human, Mouse, Rat

Host: Rabbit

Abbexa Ltd, Innovation Centre, Cambridge Science Park, Cambridge, CB4 0EY, UK
Telephone: +44 (0) 1223 755950 - Fax: +44 (0) 1223 755951 - E-Mail: info@abbexa.com

Clonality: Polyclonal

Tested Applications: WB, IHC

Recommended dilutions: WB: 1/500 - 1/2000, IHC: 1/100 - 1/200. Optimal dilutions/concentrations should be determined by the end user.

Purification: Affinity purified.

Form: Liquid

Isotype: IgG

Conjugation: Unconjugated

Storage: Aliquot and store at -20 °C. Avoid repeated freeze/thaw cycles.

Molecular Weight: Calculated MW: 61 kDa
Observed MW: 50 kDa

Swiss Prot: [Q96MK3](#)

GeneID: [54757](#)

Gene Symbol: FAM20A

Concentration: > 1 mg/ml

Buffer: PBS, pH 7.3, 0.02% sodium azide, 50% glycerol.

Note: This product is for research use only.