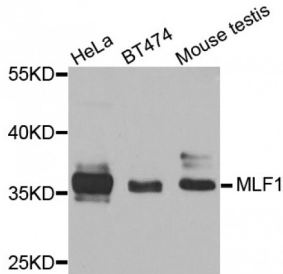


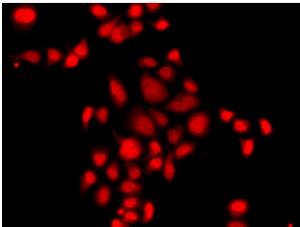
Abbexa Ltd, Innovation Centre, Cambridge Science Park, Cambridge, CB4 0EY, UK
Telephone: +44 (0) 1223 755950 - Fax: +44 (0) 1223 755951 - E-Mail: info@abbexa.com

Myeloid Leukemia Factor 1 (MLF1) Antibody

Catalogue No.: abx006252



Western blot analysis of extracts of various cell lines, using MLF1 antibody (abx006252) at 1/1000 dilution.



Immunofluorescence analysis of A549 cells using MLF1 antibody (abx006252).

MLF1 Antibody is a Rabbit Polyclonal Antibody against MLF1.

Target:	MLF1
Reactivity:	Human, Mouse
Host:	Rabbit
Clonality:	Polyclonal
Tested Applications:	WB, IF/ICC
Recommended dilutions:	WB: 1/500 - 1/2000, IF/ICC: 1/50 - 1/100. Optimal dilutions/concentrations should be determined by the end user.
Purification:	Affinity purified.
Form:	Liquid
Isotype:	IgG
Conjugation:	Unconjugated
Storage:	Aliquot and store at -20 °C. Avoid repeated freeze/thaw cycles.

Abbexa Ltd, Innovation Centre, Cambridge Science Park, Cambridge, CB4 0EY, UK
Telephone: +44 (0) 1223 755950 - Fax: +44 (0) 1223 755951 - E-Mail: info@abbexa.com

Molecular Weight: Calculated MW: 23 kDa/27 kDa/29 kDa/30 kDa/33 kDa
Observed MW: 35 kDa

Swiss Prot: [P58340](#)

GeneID: [4291](#)

Gene Symbol: MLF1

Concentration: > 1 mg/ml

Buffer: PBS, pH 7.3, 0.02% sodium azide, 50% glycerol.

Note: This product is for research use only.