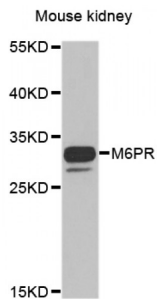


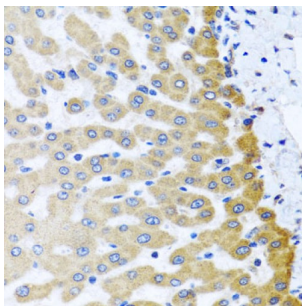
Abbexa Ltd, Innovation Centre, Cambridge Science Park, Cambridge, CB4 0EY, UK
Telephone: +44 (0) 1223 755950 - Fax: +44 (0) 1223 755951 - E-Mail: info@abbexa.com

Cation Dependent Mannose 6-Phosphate Receptor (M6PR) Antibody

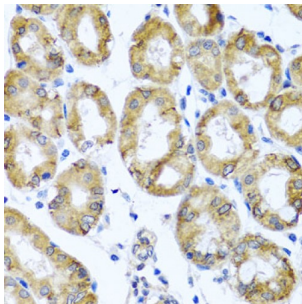
Catalogue No.: abx006336



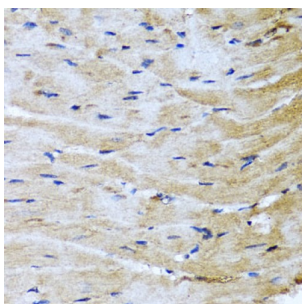
Western blot analysis of extracts of mouse kidney, using M6PR antibody (abx006336) at 1/1000 dilution.



Immunohistochemistry of paraffin-embedded human liver injury using M6PR antibody (abx006336) at dilution of 1/100 (40x lens).



Immunohistochemistry of paraffin-embedded human stomach using M6PR antibody (abx006336) at dilution of 1/100 (40x lens).



Immunohistochemistry of paraffin-embedded mouse heart using M6PR antibody (abx006336) at dilution of 1/100 (40x lens).

M6PR Antibody is a Rabbit Polyclonal Antibody against M6PR.

Target: M6PR

Reactivity: Human, Mouse

Host: Rabbit

Abbexa Ltd, Innovation Centre, Cambridge Science Park, Cambridge, CB4 0EY, UK
Telephone: +44 (0) 1223 755950 - Fax: +44 (0) 1223 755951 - E-Mail: info@abbexa.com

Clonality: Polyclonal

Tested Applications: WB, IHC

Recommended dilutions: WB: 1/500 - 1/2000, IHC: 1/50 - 1/200. Optimal dilutions/concentrations should be determined by the end user.

Purification: Affinity purified.

Form: Liquid

Isotype: IgG

Conjugation: Unconjugated

Storage: Aliquot and store at -20 °C. Avoid repeated freeze/thaw cycles.

Molecular Weight: Calculated MW: 30 kDa
Observed MW: 31 kDa

Swiss Prot: [P20645](#)

GeneID: [4074](#)

Gene Symbol: M6PR

Concentration: > 1 mg/ml

Buffer: PBS, pH 7.3, 0.02% sodium azide, 50% glycerol.

Note: This product is for research use only.