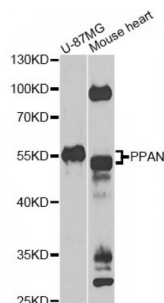


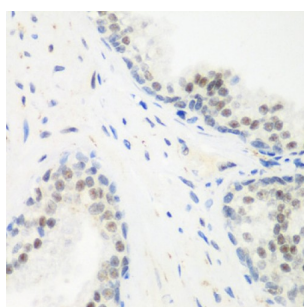
Abbexa Ltd, Innovation Centre, Cambridge Science Park, Cambridge, CB4 0EY, UK
 Telephone: +44 (0) 1223 755950 - Fax: +44 (0) 1223 755951 - E-Mail: info@abbexa.com

Peter Pan Homolog (Drosophila) (PPAN) Antibody

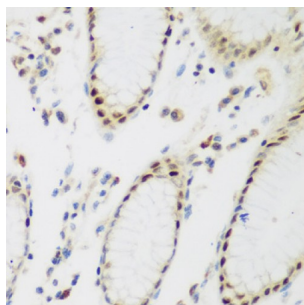
Catalogue No.: abx006467



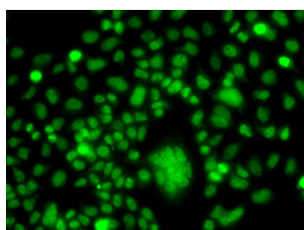
Western blot analysis of extracts of various cell lines, using PPAN Antibody (abx006467) at 1/1000 dilution.



Immunohistochemistry of paraffin-embedded human prostate using PPAN antibody (abx006467) at dilution of 1/200 (40x lens).



Immunohistochemistry of paraffin-embedded human stomach using PPAN antibody (abx006467) at dilution of 1/200 (40x lens).



Immunofluorescence analysis of A549 cells using PPAN antibody (abx006467).

PPAN Antibody is a Rabbit Polyclonal Antibody against PPAN.

Target: Suppressor of SWI4 1 homolog

Reactivity: Human, Mouse

Host: Rabbit

Abbexa Ltd, Innovation Centre, Cambridge Science Park, Cambridge, CB4 0EY, UK
Telephone: +44 (0) 1223 755950 - Fax: +44 (0) 1223 755951 - E-Mail: info@abbexa.com

Clonality: Polyclonal

Tested Applications: WB, IHC, IF/ICC

Recommended dilutions: WB: 1/500 - 1/2000, IHC: 1/50 - 1/200, IF/ICC: 1/50 - 1/200. Optimal dilutions/concentrations should be determined by the end user.

Purification: Affinity purified.

Form: Liquid

Isotype: IgG

Conjugation: Unconjugated

Storage: Aliquot and store at -20 °C. Avoid repeated freeze/thaw cycles.

Molecular Weight: Calculated MW: 51 kDa/53 kDa/58 kDa
Observed MW: 55 kDa

Swiss Prot: [Q9NQ55](#)

GeneID: [56342](#)

Gene Symbol: PPAN

Concentration: > 1 mg/ml

Buffer: PBS, pH 7.3, 0.02% sodium azide, 50% glycerol.

Note: This product is for research use only.