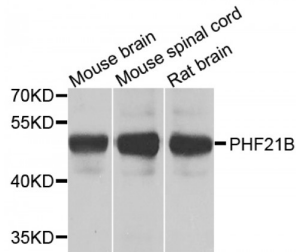


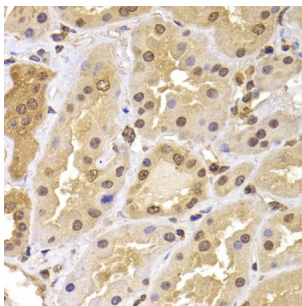
Abbexa Ltd, Innovation Centre, Cambridge Science Park, Cambridge, CB4 0EY, UK  
 Telephone: +44 (0) 1223 755950 - Fax: +44 (0) 1223 755951 - E-Mail: info@abbexa.com

## PHF Finger Protein 21B (PHF21B) Antibody

Catalogue No.: abx006556



Western blot analysis of extracts of various cell lines, using PHF21B antibody (abx006556) at 1/1000 dilution.



Immunohistochemistry of paraffin-embedded human kidney using PHF21B antibody (abx006556) at dilution of 1/100 (40x lens).

PHF21B Antibody is a Rabbit Polyclonal Antibody against PHF21B.

**Target:** PHF21B

**Reactivity:** Human, Mouse, Rat

**Host:** Rabbit

**Clonality:** Polyclonal

**Tested Applications:** WB, IHC

**Recommended dilutions:** WB: 1/500 - 1/2000, IHC: 1/50 - 1/200. Optimal dilutions/concentrations should be determined by the end user.

**Purification:** Affinity purified.

**Form:** Liquid

**Isotype:** IgG

**Conjugation:** Unconjugated

**Storage:** Aliquot and store at -20 °C. Avoid repeated freeze/thaw cycles.

Abbexa Ltd, Innovation Centre, Cambridge Science Park, Cambridge, CB4 0EY, UK  
Telephone: +44 (0) 1223 755950 - Fax: +44 (0) 1223 755951 - E-Mail: info@abbexa.com

**Molecular Weight:** Calculated MW: 51 kDa/53 kDa/57 kDa  
Observed MW: 50 kDa

**Swiss Prot:** [Q96EK2](#)

**GeneID:** [112885](#)

**Gene Symbol:** PHF21B

**Concentration:** > 1 mg/ml

**Buffer:** PBS, pH 7.3, 0.02% sodium azide, 50% glycerol.

**Note:** This product is for research use only.