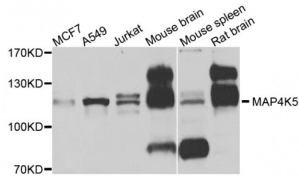


Abbexa Ltd, Innovation Centre, Cambridge Science Park, Cambridge, CB4 0EY, UK
 Telephone: +44 (0) 1223 755950 - Fax: +44 (0) 1223 755951 - E-Mail: info@abbexa.com

MEK Kinase Kinase 5 (MAP4K5) Antibody

Catalogue No.: abx006589



Western blot analysis of extracts of various cell lines, using MAP4K5 antibody (abx006589) at 1/1000 dilution.

MAP4K5 Antibody is a Rabbit Polyclonal Antibody against MAP4K5.

Target: MAP4K5

Reactivity: Human, Mouse, Rat

Host: Rabbit

Clonality: Polyclonal

Tested Applications: WB

Recommended dilutions: WB: 1/500 - 1/2000. Optimal dilutions/concentrations should be determined by the end user.

Purification: Affinity purified.

Form: Liquid

Isotype: IgG

Conjugation: Unconjugated

Storage: Aliquot and store at -20 °C. Avoid repeated freeze/thaw cycles.

Molecular Weight: Calculated MW: 95 kDa
 Observed MW: 120 kDa

Swiss Prot: [Q9Y4K4](#)

GenID: [11183](#)

Gene Symbol: MAP4K5

Abbexa Ltd, Innovation Centre, Cambridge Science Park, Cambridge, CB4 0EY, UK
Telephone: +44 (0) 1223 755950 - Fax: +44 (0) 1223 755951 - E-Mail: info@abbexa.com

Concentration: > 1 mg/ml

Buffer: PBS, pH 7.3, 0.02% sodium azide, 50% glycerol.

Note: This product is for research use only.