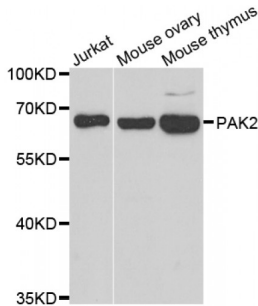


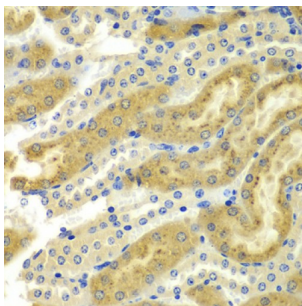
Abbexa Ltd, Innovation Centre, Cambridge Science Park, Cambridge, CB4 0EY, UK
 Telephone: +44 (0) 1223 755950 - Fax: +44 (0) 1223 755951 - E-Mail: info@abbexa.com

P21 Protein Activated Kinase 2 (PAK2) Antibody

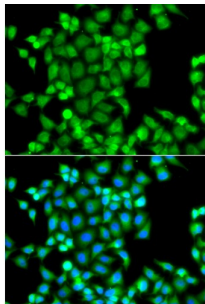
Catalogue No.: abx006917



Western blot analysis of extracts of various cell lines, using PAK2 antibody (abx006917) at 1/1000 dilution.



Immunohistochemistry of paraffin-embedded mouse kidney using PAK2 antibody (abx006917) at dilution of 1/100 (40x lens).



Immunofluorescence analysis of A549 cells using PAK2 antibody (abx006917). Blue: DAPI for nuclear staining.

PAK2 Antibody is a Rabbit Polyclonal Antibody against PAK2.

Target: PAK2

Reactivity: Human, Mouse, Rat

Host: Rabbit

Clonality: Polyclonal

Tested Applications: WB, IHC, IF/ICC

Recommended dilutions: WB: 1/500 - 1/2000, IHC: 1/50 - 1/200, IF/ICC: 1/50 - 1/200. Optimal dilutions/concentrations should be determined by the end user.

Purification: Affinity purified.

Abbexa Ltd, Innovation Centre, Cambridge Science Park, Cambridge, CB4 0EY, UK
Telephone: +44 (0) 1223 755950 - Fax: +44 (0) 1223 755951 - E-Mail: info@abbexa.com

Form:	Liquid
Isotype:	IgG
Conjugation:	Unconjugated
Storage:	Aliquot and store at -20 °C. Avoid repeated freeze/thaw cycles.
Molecular Weight:	Calculated MW: 58 kDa Observed MW: 58 kDa
Swiss Prot:	Q13177
GeneID:	5062
Gene Symbol:	PAK2
Concentration:	> 1 mg/ml
Buffer:	PBS, pH 7.3, 0.02% sodium azide, 50% glycerol.
Note:	This product is for research use only.