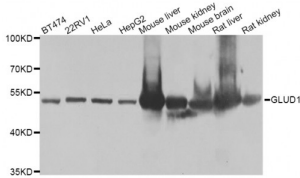


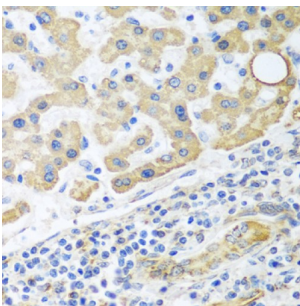
Abbexa Ltd, Innovation Centre, Cambridge Science Park, Cambridge, CB4 0EY, UK
Telephone: +44 (0) 1223 755950 - Fax: +44 (0) 1223 755951 - E-Mail: info@abbexa.com

Glutamate Dehydrogenase (GLUD1) Antibody

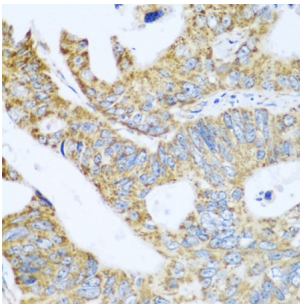
Catalogue No.: abx007034



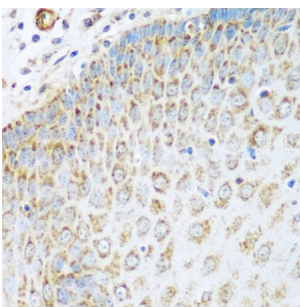
Western blot analysis of extracts of various cell lines, using GLUD1 antibody (abx007034) at 1/1000 dilution.



Immunohistochemistry of paraffin-embedded human liver cancer using GLUD1 antibody (abx007034) at dilution of 1/100 (40x lens).



Immunohistochemistry of paraffin-embedded human colon carcinoma using GLUD1 antibody (abx007034) at dilution of 1/100 (40x lens).



Immunohistochemistry of paraffin-embedded human esophagus using GLUD1 antibody (abx007034) at dilution of 1/100 (40x lens).

GLUD1 Antibody is a Rabbit Polyclonal Antibody against GLUD1.

Target: Glutamate Dehydrogenase 1

Reactivity: Human, Mouse, Rat

Host: Rabbit

Abbexa Ltd, Innovation Centre, Cambridge Science Park, Cambridge, CB4 0EY, UK
Telephone: +44 (0) 1223 755950 - Fax: +44 (0) 1223 755951 - E-Mail: info@abbexa.com

Clonality:	Polyclonal
Tested Applications:	WB, IHC
Recommended dilutions:	WB: 1/500 - 1/2000, IHC: 1/100 - 1/200. Optimal dilutions/concentrations should be determined by the end user.
Purification:	Affinity purified.
Form:	Liquid
Isotype:	IgG
Conjugation:	Unconjugated
Storage:	Aliquot and store at -20 °C. Avoid repeated freeze/thaw cycles.
Molecular Weight:	Calculated MW: 42 kDa/46 kDa/61 kDa Observed MW: 50 kDa
Swiss Prot:	P00367
GeneID:	2746
Gene Symbol:	GLUD1
Concentration:	> 1 mg/ml
Buffer:	PBS, pH 7.3, 0.02% sodium azide, 50% glycerol.
Note:	This product is for research use only.