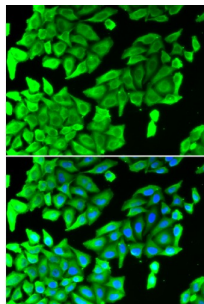


Abbexa Ltd, Innovation Centre, Cambridge Science Park, Cambridge, CB4 0EY, UK
Telephone: +44 (0) 1223 755950 - Fax: +44 (0) 1223 755951 - E-Mail: info@abbexa.com

Mitogen Activated Protein Kinase 8 (MAPK8/JNK1) Antibody

Catalogue No.: abx007332



Immunofluorescence analysis of U2OS cells using MAPK8 antibody (abx007332). Blue: DAPI for nuclear staining.

MAPK8 Antibody is a Rabbit Polyclonal Antibody against MAPK8.

Target: Mitogen Activated Protein Kinase 8 (MAPK8/JNK1)

Reactivity: Human

Host: Rabbit

Clonality: Polyclonal

Tested Applications: IF/ICC

Recommended dilutions: IF/ICC: 1/50 - 1/200. Optimal dilutions/concentrations should be determined by the end user.

Purification: Affinity purified.

Form: Liquid

Isotype: IgG

Conjugation: Unconjugated

Storage: Aliquot and store at -20 °C. Avoid repeated freeze/thaw cycles.

Molecular Weight: Calculated MW: 35 kDa/44 kDa/48 kDa

Swiss Prot: [P45983](#)

GeneID: [5599](#)

Gene Symbol: MAPK8

Abbexa Ltd, Innovation Centre, Cambridge Science Park, Cambridge, CB4 0EY, UK
Telephone: +44 (0) 1223 755950 - Fax: +44 (0) 1223 755951 - E-Mail: info@abbexa.com

Concentration: > 1 mg/ml

Buffer: PBS, pH 7.3, 0.02% sodium azide, 50% glycerol.

Note: This product is for research use only.