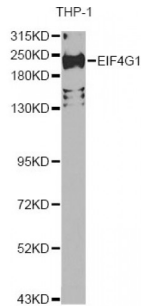
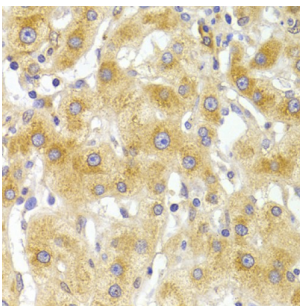


Eukaryotic Translation Initiation Factor 4 Gamma 1 (EIF4G1) Antibody

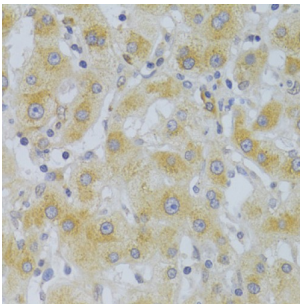
Catalogue No.: abx007344



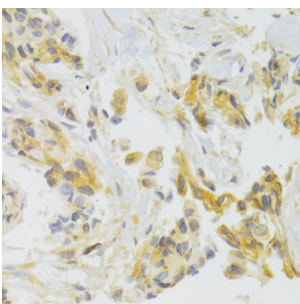
Western blot analysis of extracts of THP-1 cells, using EIF4G1 Antibody (abx007344) at 1/200 dilution.



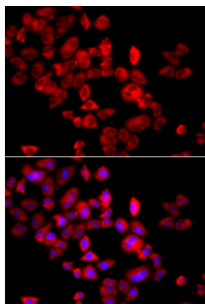
Immunohistochemistry of paraffin-embedded human liver injury using EIF4G1 Antibody (abx007344) at dilution of 1/100 (40x lens).



Immunohistochemistry of paraffin-embedded human liver cancer using EIF4G1 Antibody (abx007344) at dilution of 1/100 (40x lens).



Immunohistochemistry of paraffin-embedded human breast cancer using EIF4G1 Antibody (abx007344) at dilution of 1/100 (40x lens).



Immunofluorescence analysis of A549 cells using EIF4G1 antibody (abx007344). Blue: DAPI for nuclear staining.

EIF4G1 Antibody is a Rabbit Polyclonal Antibody against EIF4G1.

Abbexa Ltd, Innovation Centre, Cambridge Science Park, Cambridge, CB4 0EY, UK
Telephone: +44 (0) 1223 755950 - Fax: +44 (0) 1223 755951 - E-Mail: info@abbexa.com

Target:	EIF4G1
Reactivity:	Human
Host:	Rabbit
Clonality:	Polyclonal
Tested Applications:	WB, IHC, IF/ICC
Recommended dilutions:	WB: 1/500 - 1/2000, IHC: 1/50 - 1/200, IF/ICC: 1/50 - 1/200. Optimal dilutions/concentrations should be determined by the end user.
Purification:	Affinity purified.
Form:	Liquid
Isotype:	IgG
Conjugation:	Unconjugated
Storage:	Aliquot and store at -20 °C. Avoid repeated freeze/thaw cycles.
Molecular Weight:	Calculated MW: 154 kDa/158 kDa/166 kDa/171 kDa/175 kDa/176 kDa Observed MW: 230 kDa
GeneID:	1981
Gene Symbol:	EIF4G1
Concentration:	> 1 mg/ml
Buffer:	PBS, pH 7.3, 0.02% sodium azide, 50% glycerol.
Note:	This product is for research use only.