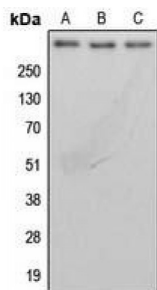


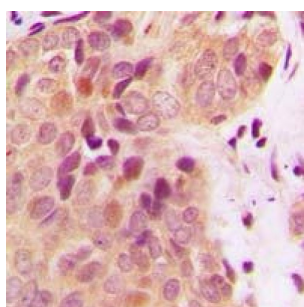
Abbexa Ltd, Innovation Centre, Cambridge Science Park, Cambridge, CB4 0EY, UK  
Telephone: +44 (0) 1223 755950 - Fax: +44 (0) 1223 755951 - E-Mail: [info@abbexa.com](mailto:info@abbexa.com)

## Breast Cancer Type 2 Susceptibility Protein (BRCA2) Antibody

Catalogue No.: abx007568



Western blot analysis of BRCA2 expression in MDAMB231 (A), MCF7 (B), rat lung (C) whole cell lysates.



Immunohistochemical analysis of BRCA2 staining in human breast cancer formalin fixed paraffin embedded tissue section. The section was pre-treated using heat mediated antigen retrieval with sodium citrate buffer (pH 6.0). The section was then incubated with the antibody at room temperature and detected using an HRP conjugated compact polymer system. DAB was used as the chromogen. The section was then counterstained with haematoxylin and mounted with DPX.

BRCA2 Antibody is a Rabbit Polyclonal antibody against BRCA2.

**Target:** BRCA2

**Reactivity:** Human, Rat, Monkey

**Host:** Rabbit

**Clonality:** Polyclonal

**Tested Applications:** WB, IHC

**Recommended dilutions:** WB: 1/500 - 1/1000, IH: 1/100 - 1/200. Optimal dilutions/concentrations should be determined by the end user.

**Immunogen:** KLH-conjugated synthetic peptide encompassing a sequence within the N-term region of human BRCA2. The exact sequence is proprietary.

**Purification:** The antibody was purified by immunogen affinity chromatography.

**Form:** Liquid

**Conjugation:** Unconjugated

**Specificity:** Recognizes endogenous levels of BRCA2 protein

Abbexa Ltd, Innovation Centre, Cambridge Science Park, Cambridge, CB4 0EY, UK  
Telephone: +44 (0) 1223 755950 - Fax: +44 (0) 1223 755951 - E-Mail: [info@abbexa.com](mailto:info@abbexa.com)

**Storage:** Aliquot and store at -20 °C. Avoid repeated freeze/thaw cycles.

**Swiss Prot:** [P51587](#) [O35923](#)

**GeneID:** [675](#)

**Gene Symbol:** BRCA2

**Buffer:** Liquid in 0.42% Potassium phosphate, 0.87% Sodium chloride, pH 7.3, 30% glycerol, and 0.01% sodium azide.

**Note:** This product is for research use only.