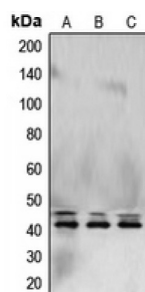


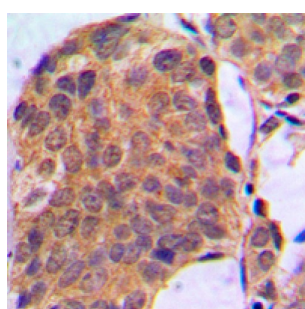
Abbexa Ltd, Innovation Centre, Cambridge Science Park, Cambridge, CB4 0EY, UK
Telephone: +44 (0) 1223 755950 - Fax: +44 (0) 1223 755951 - E-Mail: info@abbexa.com

Mitogen-Activated Protein Kinase 3 And 1 (ERK1/2) Antibody

Catalogue No.: abx008823



Western blot analysis of ERK1/2 expression in (A) HeLa, (B) NIH3T3, and (C) PC12 whole cell lysates.



Immunohistochemical analysis of ERK1/2 staining in human breast cancer formalin fixed paraffin embedded tissue section. The section was pre-treated using heat mediated antigen retrieval with sodium citrate buffer (pH 6.0). The section was then incubated with the antibody at room temperature and detected using an HRP-conjugated compact polymer system. DAB was used as the chromogen. The section was then counterstained with haematoxylin and mounted with DPX.

ERK1/2 Antibody is a Rabbit Polyclonal antibody against ERK1/2.

Target: ERK1/2

Reactivity: Human, Mouse, Rat, Cow, Dog, Pig

Host: Rabbit

Clonality: Polyclonal

Tested Applications: WB, IHC

Recommended dilutions: Optimal dilutions/concentrations should be determined by the end user.

Immunogen: KLH-conjugated synthetic peptide.

Epitope Region: C-terminal region of human ERK1/2. The exact sequence is proprietary.

Purification: Purified by immunogen affinity chromatography.

Form: Liquid

Conjugation: Unconjugated

Abbexa Ltd, Innovation Centre, Cambridge Science Park, Cambridge, CB4 0EY, UK
Telephone: +44 (0) 1223 755950 - Fax: +44 (0) 1223 755951 - E-Mail: info@abbexa.com

Specificity:	Recognises endogenous levels of ERK1/2 protein.
Storage:	Aliquot and store at -20 °C. Avoid repeated freeze/thaw cycles.
Swiss Prot:	<u>P27361</u> <u>P28482</u> <u>Q63844</u> <u>P63085</u> <u>P21708</u> <u>P63086</u>
GeneID:	<u>5595</u> <u>26417</u> <u>26413</u> <u>50689</u> <u>116590</u>
Gene Symbol:	MAPK1; MAPK3
Buffer:	0.42% Potassium phosphate, 0.87% Sodium chloride, pH 7.3, 30% glycerol, and 0.01% sodium azide.
Note:	This product is for research use only.