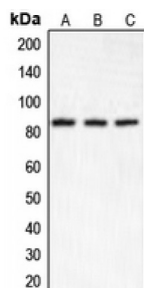


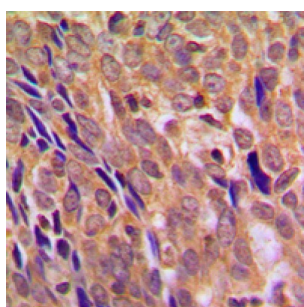
Abbexa Ltd, Innovation Centre, Cambridge Science Park, Cambridge, CB4 0EY, UK
Telephone: +44 (0) 1223 755950 - Fax: +44 (0) 1223 755951 - E-Mail: info@abbexa.com

IKK Alpha (IKKA) Antibody

Catalogue No.: abx009432



Western blot analysis of IKK alpha expression in (A), HeLa, (B) Raw264.7, and (C) PC12 whole cell lysates.



Immunohistochemical analysis of IKK alpha staining in human breast cancer formalin fixed paraffin embedded tissue section. The section was pre-treated using heat mediated antigen retrieval with sodium citrate buffer (pH 6.0). The section was then incubated with the antibody at room temperature and detected using an HRP-conjugated compact polymer system. DAB was used as the chromogen. The section was then counterstained with haematoxylin and mounted with DPX.

IKK alpha Antibody is a Rabbit Polyclonal antibody against IKK alpha.

Target: IKK alpha

Reactivity: Human, Mouse, Rat, Cow, Pig

Host: Rabbit

Clonality: Polyclonal

Tested Applications: WB, IHC

Recommended dilutions: WB: 1/500 - 1/1000, IHC: 1/100 - 1/200. Optimal dilutions/concentrations should be determined by the end user.

Immunogen: KLH-conjugated synthetic peptide

Epitope Region: N-terminal region of human IKK alpha. The exact sequence is proprietary.

Purification: Purified by immunogen affinity chromatography.

Conjugation: Unconjugated

Specificity: Recognises endogenous levels of IKK alpha protein.

Abbexa Ltd, Innovation Centre, Cambridge Science Park, Cambridge, CB4 0EY, UK
Telephone: +44 (0) 1223 755950 - Fax: +44 (0) 1223 755951 - E-Mail: info@abbexa.com

Storage: Aliquot and store at -20 °C. Avoid repeated freeze/thaw cycles.

Swiss Prot: [O15111 Q60680](#)

GeneID: [1147 12675](#)

Gene Symbol: CHUK

Concentration: 1 mg/ml

Buffer: 0.42% Potassium phosphate, 0.87% Sodium chloride, pH 7.3, 30% glycerol, and 0.01% sodium azide.

Note: This product is for research use only.