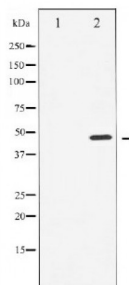


Abbexa Ltd, Innovation Centre, Cambridge Science Park, Cambridge, CB4 0EY, UK
Telephone: +44 (0) 1223 755950 - Fax: +44 (0) 1223 755951 - E-Mail: info@abbexa.com

Cyclin E1 (Cyclin E1) Antibody

Catalogue No.: abx010506



Western blot analysis of Cyclin E1 expression in Paclitaxel treated HeLa whole cell lysates. The lane on the left is treated with the antigen-specific peptide.

Cyclin E1 antibody detects endogenous levels of total Cyclin E1. CCNE1 a member of the highly conserved cyclin family, whose members are characterized by a dramatic periodicity in protein abundance through the cell cycle. Cyclins function as regulators of CDK kinases. Forms a complex with and functions as a regulatory subunit of CDK2, whose activity is required for cell cycle G1/S transition. Accumulates at the G1-S phase boundary and is degraded as cells progress through S phase. Two alternatively spliced isoforms have been described.

Target: Cyclin E1

Reactivity: Human

Host: Rabbit

Clonality: Polyclonal

Tested Applications: WB

Recommended dilutions: WB: 1/500 - 1/2000. Optimal dilutions/concentrations should be determined by the end user.

Immunogen: Synthesised peptide derived from human Cyclin E1

Purification: Purified by immunogen affinity chromatography.

Form: Liquid

Conjugation: Unconjugated

Specificity: Cyclin E1 Antibody detects endogenous levels of total Cyclin E1

Storage: Aliquot and store at -20 °C. Avoid repeated freeze/thaw cycles.

Molecular Weight: 48 kDa

Abbexa Ltd, Innovation Centre, Cambridge Science Park, Cambridge, CB4 0EY, UK
Telephone: +44 (0) 1223 755950 - Fax: +44 (0) 1223 755951 - E-Mail: info@abbexa.com

Gene Symbol: CCNE1

Ensembl: ENSG00000105173

Concentration: 1 mg/ml

Buffer: PBS, pH 7.3, containing 0.05% sodium azide and 50% glycerol.

Note: This product is for research use only.