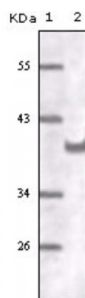


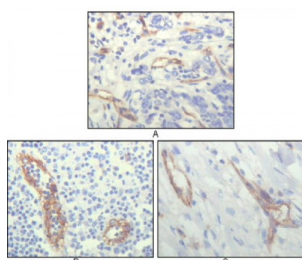
Abbexa Ltd, Innovation Centre, Cambridge Science Park, Cambridge, CB4 0EY, UK
Telephone: +44 (0) 1223 755950 - Fax: +44 (0) 1223 755951 - E-Mail: info@abbexa.com

Platelet And Endothelial Cell Adhesion Molecule 1 (PECAM1) Antibody

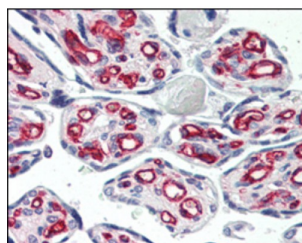
Catalogue No.:abx010521



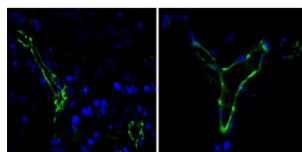
Western blot analysis using CD31 antibody against truncated CD31 recombinant protein.



Immunohistochemical analysis of paraffin-embedded human lung cancer (A), lymphonodus tissue (B) and breast cancer (C), showing cytoplasmic localization of vascular endothelial cells using CD31 antibody with DAB staining.



Immunohistochemical analysis of paraffin-embedded human placenta using CD31 antibody.



Immunofluorescence analysis of paraffin-embedded human lung cancer (left) and breast cancer (right) cells using CD31 antibody (green). Blue: DRAQ5 fluorescent DNA dye.

CD31, also known as platelet endothelial cell adhesion molecule 1 (PECAM1), is a type I integral membrane glycoprotein and a member of the immunoglobulin superfamily of cell surface receptors. It is constitutively expressed on the surface of endothelial cells, and concentrated at the junction between them. The antibody reacts with the murine form of the Platelet-Endothelial Cell Adhesion Molecule. The reactivity of the antibody is restricted to the isoform of the molecule that is selectively expressed by endothelial cells. The antigen is predominantly present at the lateral borders of endothelial cells as described for human PECAM-1. It is also weakly expressed on many peripheral lymphoid cells and platelets. CD31 has been used to measure angiogenesis in association with tumor recurrence. Other studies have also indicated that CD31 and CD34 can be used as markers for myeloid progenitor cells and recognize different subsets of myeloid leukemia infiltrates (granular sarcomas).

Abbexa Ltd, Innovation Centre, Cambridge Science Park, Cambridge, CB4 0EY, UK
Telephone: +44 (0) 1223 755950 - Fax: +44 (0) 1223 755951 - E-Mail: info@abbexa.com

Target:	CD31
Reactivity:	Human
Host:	Mouse
Clonality:	Monoclonal
Tested Applications:	ELISA, WB, IHC, IF/ICC
Recommended dilutions:	ELISA: 1/10000, WB: 1/500 - 1/2000, IHC: 1/200 - 1/1000, IF/ICC: 1/200 - 1/1000. Optimal dilutions/concentrations should be determined by the end user.
Immunogen:	Purified recombinant fragment of human CD31 expressed in E. Coli.
Purification:	Unpurified Ascites.
Isotype:	IgG ₁
Conjugation:	Unconjugated
Storage:	Aliquot and store at -20 °C. Avoid repeated freeze/thaw cycles.
Molecular Weight:	100 kDa
Swiss Prot:	P16284
GeneID:	5175
Gene Symbol:	PECAM1
OMIM:	173445
HGNC:	8823
Ensembl:	ENSG00000261371
Buffer:	Ascitic fluid containing 0.03% sodium azide.
Note:	This product is for research use only.