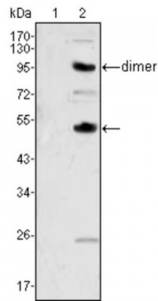
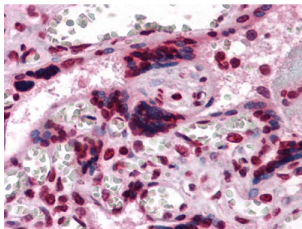


## Macrophage Colony-Stimulating Factor 1 (CSF1) Antibody

Catalogue No.: abx010604



Western blot analysis using CSF1 antibody against human recombinant CSF2 (AA:18-144) (1) and CSF1 (AA:33-496) (2).



Immunohistochemical analysis of paraffin-embedded human Placenta tissues using anti-CSF1 antibody.

CSF1, also known as MCSF, is a four alpha helical bundle cytokine that controls the production, differentiation, and function of macrophages. The active form of the protein is found extracellularly as a disulfide-linked homodimer, and is thought to be produced by proteolytic cleavage of membrane-bound precursors. This protein may be involved in development of the placenta.

<b>Target:</b>	CSF1
<b>Reactivity:</b>	Human
<b>Host:</b>	Mouse
<b>Clonality:</b>	Monoclonal
<b>Tested Applications:</b>	ELISA, WB, IHC
<b>Recommended dilutions:</b>	ELISA: 1/10000, WB: 1/500 - 1/2000, IHC: 1/200 - 1/1000. Optimal dilutions/concentrations should be determined by the end user.
<b>Immunogen:</b>	Purified recombinant fragment of human CSF1 expressed in E. Coli.
<b>Purification:</b>	Unpurified Ascites.
<b>Isotype:</b>	IgG <sub>1</sub>
<b>Conjugation:</b>	Unconjugated

Abbexa Ltd, Innovation Centre, Cambridge Science Park, Cambridge, CB4 0EY, UK  
Telephone: +44 (0) 1223 755950 - Fax: +44 (0) 1223 755951 - E-Mail: [info@abbexa.com](mailto:info@abbexa.com)

**Storage:** Aliquot and store at -20 °C. Avoid repeated freeze/thaw cycles.

**Molecular Weight:** 60 kDa

**Swiss Prot:** [P09603](#)

**GeneID:** [1435](#)

**Gene Symbol:** CSF1

**OMIM:** [120420](#)

**HGNC:** 2432

**Ensembl:** ENSG00000184371

**Buffer:** Ascitic fluid containing 0.03% sodium azide.

**Note:** This product is for research use only.