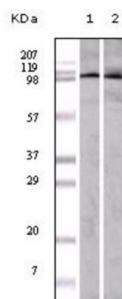


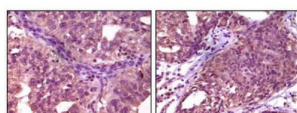
Abbexa Ltd, Innovation Centre, Cambridge Science Park, Cambridge, CB4 0EY, UK  
Telephone: +44 (0) 1223 755950 - Fax: +44 (0) 1223 755951 - E-Mail: [info@abbexa.com](mailto:info@abbexa.com)

## EPH Receptor A1 (EphA1) Antibody

Catalogue No.: abx010718



Western blot analysis using EphA1 antibody against A549 (1) and HeLa (2) cell lysate.



Immunohistochemical analysis of paraffin-embedded human ovary carcinoma (left) and breast carcinoma (right), showing cytoplasmic localization using EphA1 antibody with DAB staining.

EPH receptor A1 (EphA1), with 976-amino acid protein (about 107 kDa), belongs to the ephrin receptor subfamily of the protein-tyrosine kinase family. The Eph subfamily represents the largest group of receptor protein tyrosine kinases identified to date and their ligands, the ephrins, can be subdivided into two major subclasses, ephrin-A and ephrin-B. Interaction of Eph receptor tyrosine kinases with their membrane bound ephrin ligands initiates bidirectional signaling events that regulate cell migratory and adhesive behavior, particularly in the nervous system. They have been implicated in various developmental processes, including axonal guidance, angiogenesis, morphogenesis and carcinogenesis.

<b>Target:</b>	EphA1
<b>Reactivity:</b>	Human
<b>Host:</b>	Mouse
<b>Clonality:</b>	Monoclonal
<b>Tested Applications:</b>	ELISA, WB, IHC
<b>Recommended dilutions:</b>	ELISA: 1/10000, WB: 1/500 - 1/2000, IHC: 1/200 - 1/1000. Optimal dilutions/concentrations should be determined by the end user.
<b>Immunogen:</b>	Purified recombinant fragment of EphA1 expressed in E. Coli.
<b>Purification:</b>	Purified antibody

Abbexa Ltd, Innovation Centre, Cambridge Science Park, Cambridge, CB4 0EY, UK  
Telephone: +44 (0) 1223 755950 - Fax: +44 (0) 1223 755951 - E-Mail: [info@abbexa.com](mailto:info@abbexa.com)

<b>Isotype:</b>	IgG <sub>1</sub>
<b>Conjugation:</b>	Unconjugated
<b>Storage:</b>	Aliquot and store at -20 °C. Avoid repeated freeze/thaw cycles.
<b>Molecular Weight:</b>	108 kDa
<b>Swiss Prot:</b>	<a href="#">P21709</a>
<b>GeneID:</b>	<a href="#">2041</a>
<b>Gene Symbol:</b>	EPHA1
<b>OMIM:</b>	<a href="#">179610</a>
<b>Enzyme Commission Number:</b>	EC 2.7.10.1
<b>HGNC:</b>	3385
<b>Ensembl:</b>	ENSG00000146904
<b>Concentration:</b>	1.0 mg/ml
<b>Buffer:</b>	PBS containing 0.03% sodium azide.
<b>Note:</b>	This product is for research use only.