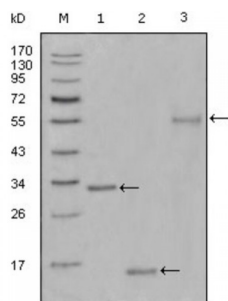


Abbexa Ltd, Innovation Centre, Cambridge Science Park, Cambridge, CB4 0EY, UK
Telephone: +44 (0) 1223 755950 - Fax: +44 (0) 1223 755951 - E-Mail: info@abbexa.com

Proliferation Marker Protein Ki-67 (KI67) Antibody

Catalogue No.: abx011069



Western blot analysis using Ki67 antibody against truncated Trx-Ki67 recombinant protein (1), truncated Ki67 (aa3118-3256) -His recombinant protein (2) and truncated Ki67 (aa3118-3256) -hIgGFc transfected CHO-K1 cell lysate (3).

Ki67, also known as MKI67, it is the prototypic cell cycle related nuclear protein, expressed by proliferating cells in all phases of the active cell cycle (G1, S, G2 and M phase). It is absent in resting (G0) cells. Ki67 antibodies are useful in establishing the cell growing fraction in neoplasms (immunohistochemically quantified by determining the number of Ki67 positive cells among the total number of resting cells = Ki67 index). In neoplastic tissues the prognostic value is comparable to the tritiated thymidine labelling index. The correlation between low Ki67 index and histologically low grade tumours is strong. Ki67 is routinely used as a neuronal marker of cell cycling and proliferation.

Target: KI67

Reactivity: Human

Host: Mouse

Clonality: Monoclonal

Tested Applications: ELISA, WB

Recommended dilutions: ELISA: 1/10000, WB: 1/500 - 1/2000. Optimal dilutions/concentrations should be determined by the end user.

Immunogen: Purified recombinant fragment of Ki167 (aa3118-3256) expressed in E. Coli.

Purification: Unpurified Ascites.

Isotype: IgG₁

Conjugation: Unconjugated

Storage: Aliquot and store at -20 °C. Avoid repeated freeze/thaw cycles.

Molecular Weight: 358 kDa

Swiss Prot: [P46013](#)

Abbexa Ltd, Innovation Centre, Cambridge Science Park, Cambridge, CB4 0EY, UK
Telephone: +44 (0) 1223 755950 - Fax: +44 (0) 1223 755951 - E-Mail: info@abbexa.com

GeneID:	<u>4288</u>
Gene Symbol:	MKI67
OMIM:	<u>176741</u>
HGNC:	7107
Ensembl:	ENSG00000148773
Buffer:	Ascitic fluid containing 0.03% sodium azide.
Note:	This product is for research use only.