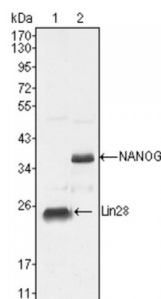


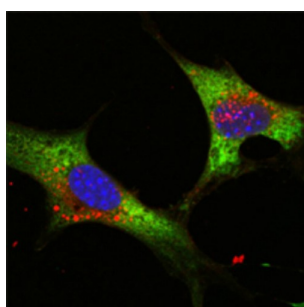
Abbexa Ltd, Innovation Centre, Cambridge Science Park, Cambridge, CB4 0EY, UK
Telephone: +44 (0) 1223 755950 - Fax: +44 (0) 1223 755951 - E-Mail: info@abbexa.com

Protein Lin-28 Homolog A (LIN28) Antibody

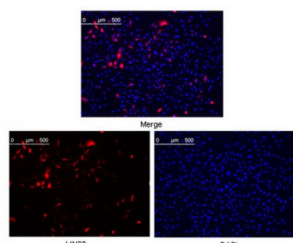
Catalogue No.: abx011091



Western blot analysis using LIN28 antibody against NTERA-2 cell lysate (1).



Confocal immunofluorescence analysis of methanol fixed HeLa cells were transfected with pMX construct of human LIN28, cells were analyzed ~62 hours after transfection.



Confocal immunofluorescence analysis of NTERA-2 cells using LIN28 antibody (green). Blue: DRAQ5 fluorescent DNA dye.

LIN28: lin-28 homolog (*C. elegans*), also known as CSDD1, ZCCHC1. Entrez Protein NP078950. LIN28 was first discovered in the nematode *C. elegans*. It is a heterochronic protein in *C. elegans* involved in the timing of developmental events and choice of stage specific cell fates. LIN28 expression has been found to be regulated post-transcriptionally by miRNAs in both nematodes and mammals. In humans it is expressed in embryonic stem cells and its expression decreases during differentiation. It is negatively regulated by retinoic acid in neuronal differentiation.

Target: LIN28

Reactivity: Human

Host: Mouse

Clonality: Monoclonal

Tested Applications: ELISA, WB, IF/ICC

Abbexa Ltd, Innovation Centre, Cambridge Science Park, Cambridge, CB4 0EY, UK
Telephone: +44 (0) 1223 755950 - Fax: +44 (0) 1223 755951 - E-Mail: info@abbexa.com

Recommended dilutions: ELISA: 1/10000, WB: 1/500 - 1/2000, IF/ICC: 1/200 - 1/1000. Optimal dilutions/concentrations should be determined by the end user.

Immunogen: Purified recombinant fragment of LIN28 (aa93-209) expressed in E. Coli.

Purification: Purified by Protein G affinity chromatography.

Form: Liquid

Isotype: IgG₁

Conjugation: Unconjugated

Storage: Aliquot and store at -20 °C. Avoid repeated freeze/thaw cycles.

Molecular Weight: 23 kDa

Swiss Prot: [Q9H9Z2](#)

GeneID: [79727](#)

Gene Symbol: LIN28A

OMIM: [611043](#)

HGNC: 15986

Ensembl: ENSG00000131914

Concentration: 1.0 mg/ml

Buffer: 0.01 M Phosphate buffer, pH 7.4 containing 0.03% sodium azide.

Note: This product is for research use only.