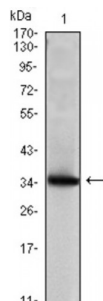


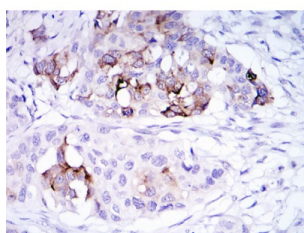
Abbexa Ltd, Innovation Centre, Cambridge Science Park, Cambridge, CB4 0EY, UK
Telephone: +44 (0) 1223 755950 - Fax: +44 (0) 1223 755951 - E-Mail: info@abbexa.com

Mammaglobin-A (SCGB2A2) Antibody

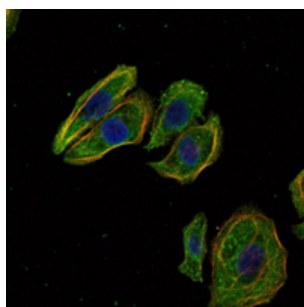
Catalogue No.: abx011105



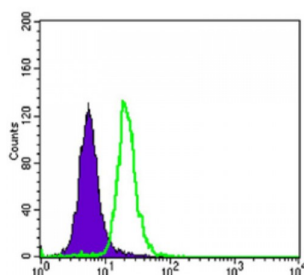
Western blot analysis using SCGB2A2 antibody against human SCGB2A2 (AA: 2-93) recombinant protein. (Expected MW is 35.8 kDa).



Immunohistochemical analysis of paraffin-embedded mammary cancer tissues using SCGB2A2 antibody with DAB staining.



Immunofluorescence analysis of HeLa cells using SCGB2A2 antibody (green). Blue: DRAQ5 fluorescent DNA dye. Red: Actin filaments have been labeled with Alexa Fluor-555 phalloidin.



Flow cytometric analysis of SK-BR-3 cells using SCGB2A2 antibody (green) and negative control (purple).

Mammaglobin is a gene that is expressed almost exclusively in the normal breast epithelium and human breast cancer. It is a member of the secretoglobulin gene family and forms a heterodimer with lipophilin B. It has been suggested that mammaglobin may be a useful marker for breast cancer clinical research. Studies investigating the detection of mRNA by RT PCR from circulating carcinoma cells in the peripheral blood of breast cancer patients have shown that mammaglobin is a highly specific marker and correlates with several prognostic factors, such as lymph node involvement. Tissue specificity: Mammary gland specific. Over-expressed in breast cancer.

Abbexa Ltd, Innovation Centre, Cambridge Science Park, Cambridge, CB4 0EY, UK
Telephone: +44 (0) 1223 755950 - Fax: +44 (0) 1223 755951 - E-Mail: info@abbexa.com

Target:	SCGB2A2
Reactivity:	Human
Host:	Mouse
Clonality:	Monoclonal
Tested Applications:	ELISA, WB, IHC, IF/ICC, FCM
Recommended dilutions:	ELISA: 1/10000, WB: 1/500 - 1/2000, IHC: 1/200 - 1/1000, IF/ICC: 1/200 - 1/1000, FCM: 1/200 - 1/400. Optimal dilutions/concentrations should be determined by the end user.
Immunogen:	Purified recombinant fragment of human SCGB2A2 expressed in E. Coli.
Purification:	Unpurified Ascites.
Isotype:	IgG ₁
Conjugation:	Unconjugated
Storage:	Aliquot and store at -20 °C. Avoid repeated freeze/thaw cycles.
Molecular Weight:	11 kDa
Swiss Prot:	Q13296
GeneID:	4250
Gene Symbol:	SCGB2A2
OMIM:	605562
HGNC:	7050
Ensembl:	ENSG00000110484
Buffer:	Ascitic fluid containing 0.03% sodium azide.
Note:	This product is for research use only.