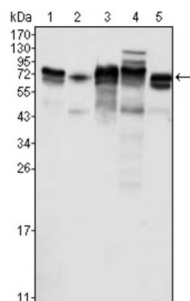


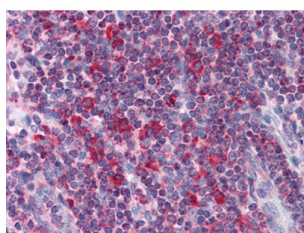
Abbexa Ltd, Innovation Centre, Cambridge Science Park, Cambridge, CB4 0EY, UK  
Telephone: +44 (0) 1223 755950 - Fax: +44 (0) 1223 755951 - E-Mail: info@abbexa.com

## Metadherin (MTDH) Antibody

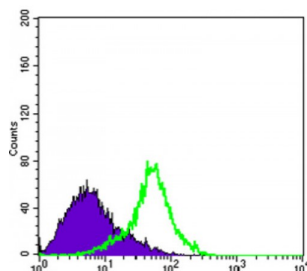
Catalogue No.: abx011143



Western blot analysis using Metadherin antibody against K562 (1), SKBR-3 (2), T47D (3), HeLa (4) and MCF-7 (5) cell lysate.



Immunohistochemical analysis of paraffin-embedded human Liver tissues using Metadherin antibody.



Flow cytometric analysis of HeLa cells using Metadherin antibody (green) and negative control (purple).

Metadherin (Metastasis adhesion protein), also known as MTDH, LYsine-RIch CEACAM1 co-isolated (LYRIC), is a novel protein that localizes with the tight junction proteins ZO-1 and occludin in polarized epithelial cells. At the tight junction, it acts not as a structural component, but is rather recruited during the maturation of the tight junction complex. Metadherin is overexpressed in breast cancer tissue and breast tumor xenografts, while much lower levels are expressed in normal breast tissue. Metadherin binds to lung vasculature, one of the four common sites of breast cancer metastasis, through a C-terminal segment in the extracellular domain; blocking this lung-homing domain with antibodies or inhibiting metadherin with siRNA has been reported to inhibit breast cancer metastasis.

**Target:** Metadherin

**Reactivity:** Human

**Host:** Mouse

**Clonality:** Monoclonal

Abbexa Ltd, Innovation Centre, Cambridge Science Park, Cambridge, CB4 0EY, UK  
Telephone: +44 (0) 1223 755950 - Fax: +44 (0) 1223 755951 - E-Mail: [info@abbexa.com](mailto:info@abbexa.com)

**Tested Applications:** ELISA, WB, IHC, FCM

**Recommended dilutions:** ELISA: 1/10000, WB: 1/500 - 1/2000, IHC: 1/200 - 1/1000, FCM: 1/200 - 1/400. Optimal dilutions/concentrations should be determined by the end user.

**Immunogen:** Purified recombinant fragment of human Metadherin expressed in E. Coli.

**Purification:** Purified by Protein G affinity chromatography.

**Form:** Liquid

**Isotype:** IgG<sub>1</sub>

**Conjugation:** Unconjugated

**Storage:** Aliquot and store at -20 °C. Avoid repeated freeze/thaw cycles.

**Molecular Weight:** 64 kDa

**Swiss Prot:** [Q86UE4](#)

**GeneID:** [92140](#)

**Gene Symbol:** MTDH

**OMIM:** [610323](#)

**HGNC:** 29608

**Ensembl:** ENSG00000147649

**Concentration:** 1.0 mg/ml

**Buffer:** PBS containing 50% glycerol and 0.03% sodium azide.

**Note:** This product is for research use only.