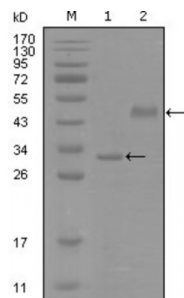


Abbexa Ltd, Innovation Centre, Cambridge Science Park, Cambridge, CB4 0EY, UK  
Telephone: +44 (0) 1223 755950 - Fax: +44 (0) 1223 755951 - E-Mail: [info@abbexa.com](mailto:info@abbexa.com)

## Sex Determining Region Y Box Protein 2 (SOX2) Antibody

Catalogue No.: abx011547



Western blot analysis using SOX2 antibody against truncated Trx-SOX2 recombinant protein (1) and truncated MBP-SOX2 (aa1-170) recombinant protein (2).

SOX2: SRY (sex determining region Y)-box 2. Entrez Protein NP003097. It is a member of the SRY-related HMG-box (SOX) family of transcription factors involved in the regulation of embryonic development and in the determination of cell fate. The product of this gene is required for stem-cell maintenance in the central nervous system, and also regulates gene expression in the stomach. Mutations in this gene have been associated with optic nerve hypoplasia and with syndromic microphthalmia, a severe form of structural eye malformation. This gene lies within an intron of another gene called SOX2 overlapping transcript (SOX2OT).

**Target:** SOX2

**Reactivity:** Human

**Host:** Mouse

**Clonality:** Monoclonal

**Tested Applications:** ELISA, WB

**Recommended dilutions:** ELISA: 1/10000, WB: 1/500 - 1/2000. Optimal dilutions/concentrations should be determined by the end user.

**Immunogen:** Purified recombinant fragment of SOX2 (aa1-170) expressed in E. Coli.

**Purification:** Unpurified Ascites.

**Isotype:** IgG<sub>1</sub>

**Conjugation:** Unconjugated

**Storage:** Aliquot and store at -20 °C. Avoid repeated freeze/thaw cycles.

**Molecular Weight:** 34.3 kDa

**Swiss Prot:** [P48431](#)

Abbexa Ltd, Innovation Centre, Cambridge Science Park, Cambridge, CB4 0EY, UK  
Telephone: +44 (0) 1223 755950 - Fax: +44 (0) 1223 755951 - E-Mail: [info@abbexa.com](mailto:info@abbexa.com)

**GeneID:** [6657](#)

**Gene Symbol:** SOX2

**OMIM:** [184429](#)

**HGNC:** 11195

**Ensembl:** ENSG00000181449

**Buffer:** Ascitic fluid containing 0.03% sodium azide.

**Note:** This product is for research use only.