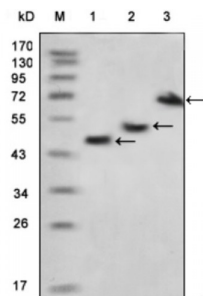


Abbexa Ltd, Innovation Centre, Cambridge Science Park, Cambridge, CB4 0EY, UK
Telephone: +44 (0) 1223 755950 - Fax: +44 (0) 1223 755951 - E-Mail: info@abbexa.com

Myelin Basic Protein (MBP) Antibody

Catalogue No.: abx011639



Western blot analysis using MBP antibody against various fusion protein with MBP tag.

The classic group of MBP isoforms (isoforms 4-14) are with PLP the most abundant protein components of the myelin membrane in the CNS. They have a role in both its formation and stabilization. The smaller isoforms might have an important role in remyelination of denuded axons in multiple sclerosis. The non- classic group of MBP isoforms (isoforms 1-3/Golli-MBPs) may preferentially have a role in the early developing brain long before myelination, maybe as components of transcriptional complexes, and may also be involved in signaling pathways in T- cells and neural cells. Differential splicing events combined to optional posttranslational modifications give a wide spectrum of isomers, each of them having maybe a specialized function.

Target: MBP

Reactivity: General

Host: Mouse

Clonality: Monoclonal

Tested Applications: ELISA, WB

Recommended dilutions: ELISA: 1/10000, WB: 1/500 - 1/2000. Optimal dilutions/concentrations should be determined by the end user.

Immunogen: Recombinant fusion protein with Maltose binding protein tag.

Purification: Unpurified Ascites.

Isotype: IgG₁

Conjugation: Unconjugated

Storage: Aliquot and store at -20 °C. Avoid repeated freeze/thaw cycles.

Molecular Weight: 33 kDa

Swiss Prot: [P02686](#)

Abbexa Ltd, Innovation Centre, Cambridge Science Park, Cambridge, CB4 0EY, UK
Telephone: +44 (0) 1223 755950 - Fax: +44 (0) 1223 755951 - E-Mail: info@abbexa.com

GeneID:	<u>4155</u>
Gene Symbol:	MBP
OMIM:	<u>159430</u>
HGNC:	6925
Ensembl:	ENSG00000197971
Buffer:	Ascitic fluid containing 0.03% sodium azide.
Note:	This product is for research use only.