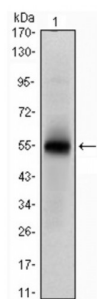


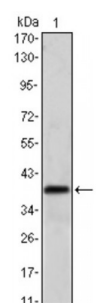
Abbexa Ltd, Innovation Centre, Cambridge Science Park, Cambridge, CB4 0EY, UK
Telephone: +44 (0) 1223 755950 - Fax: +44 (0) 1223 755951 - E-Mail: info@abbexa.com

RNA-Binding Protein Musashi Homolog 1 (MSI1) Antibody

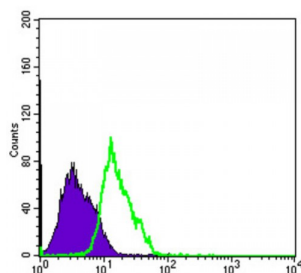
Catalogue No.: abx012056



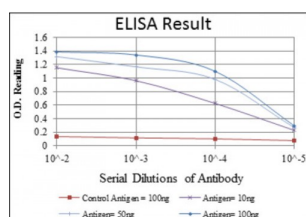
Western blot analysis using MSI1 antibody against human MSI1 (AA: 1-203) recombinant protein. (Expected MW is 48.5 kDa).



Western blot analysis using MSI1 antibody against NTERA-2 cell lysate.



Flow cytometric analysis of PC-2 cells using MSI1 antibody (green) and negative control (purple).



Red: Control Antigen (100ng) ; Purple: Antigen (10ng) ; Green: Antigen (50ng) ; Blue: Antigen (100ng).

This gene encodes a protein containing two conserved tandem RNA recognition motifs. Similar proteins in other species function as RNA-binding proteins and play central roles in posttranscriptional gene regulation. Expression of this gene has been correlated with the grade of the malignancy and proliferative activity in gliomas and melanomas. Musashi-1 is frequently used as a marker for proliferating neural precursor cells, it is also expressed in epithelial stem cells including intestinal and mammary gland stem cells. Tissue specificity: Detected in fetal kidney, brain, liver and lung, and in adult brain and pancreas. Detected in hepatoma cell lines.

Abbexa Ltd, Innovation Centre, Cambridge Science Park, Cambridge, CB4 0EY, UK
Telephone: +44 (0) 1223 755950 - Fax: +44 (0) 1223 755951 - E-Mail: info@abbexa.com

Target:	MSI1
Reactivity:	Human
Host:	Mouse
Clonality:	Monoclonal
Tested Applications:	ELISA, WB, FCM
Recommended dilutions:	ELISA: 1/10000, WB: 1/500 - 1/2000, FCM: 1/200 - 1/400. Optimal dilutions/concentrations should be determined by the end user.
Immunogen:	Purified recombinant fragment of human MSI1 expressed in E. Coli.
Purification:	Unpurified Ascites.
Isotype:	IgG ₁
Conjugation:	Unconjugated
Storage:	Aliquot and store at -20 °C. Avoid repeated freeze/thaw cycles.
Molecular Weight:	39 kDa
Swiss Prot:	O43347
GeneID:	4440
Gene Symbol:	MSI1
OMIM:	603328
HGNC:	7330
Ensembl:	ENSG00000135097
Buffer:	Ascitic fluid containing 0.03% sodium azide.
Note:	This product is for research use only.