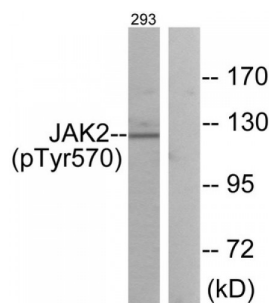


Abbexa Ltd, Innovation Centre, Cambridge Science Park, Cambridge, CB4 0EY, UK  
Telephone: +44 (0) 1223 755950 - Fax: +44 (0) 1223 755951 - E-Mail: [info@abbexa.com](mailto:info@abbexa.com)

## Janus Kinase 2 (JAK2) Antibody

Catalogue No.: abx012442



Western blot analysis of extracts from 293 cells, treated with etoposide (25uM, 24hours), using JAK2 (Phospho-Tyr570) antibody.

Rabbit polyclonal antibody against JAK2 protein. Immunogen region is Internal. Specificity is as follows for the reactive species: H:Y570, M:Y570, R:Y570.

<b>Target:</b>	JAK2
<b>Reactivity:</b>	Human, Mouse, Rat
<b>Host:</b>	Rabbit
<b>Clonality:</b>	Polyclonal
<b>Tested Applications:</b>	ELISA, WB
<b>Recommended dilutions:</b>	WB: 1/500 - 1/3000, ELISA: 1/1000. Optimal dilutions/concentrations should be determined by the end user.
<b>Immunogen:</b>	The antiserum was produced against synthesized phosphopeptide derived from human JAK2 around the phosphorylation site of tyrosine 750 (G-D-YP-G-Q).
<b>Purification:</b>	Purified from rabbit antiserum by affinity chromatography using epitope-specific immunogen.
<b>Form:</b>	Liquid
<b>Isotype:</b>	IgG
<b>Conjugation:</b>	Unconjugated
<b>Storage:</b>	Aliquot and store at -20 °C. Avoid repeated freeze/thaw cycles.
<b>Swiss Prot:</b>	<a href="#">O60674</a>
<b>Enzyme Commission Number:</b>	EC 2.7.10.2

Abbexa Ltd, Innovation Centre, Cambridge Science Park, Cambridge, CB4 0EY, UK  
Telephone: +44 (0) 1223 755950 - Fax: +44 (0) 1223 755951 - E-Mail: [info@abbexa.com](mailto:info@abbexa.com)

**Buffer:** PBS (without  $Mg^{2+}$  and  $Ca^{2+}$ ), pH 7.4, 150 mM NaCl, 0.02% sodium azide, 50% glycerol.

**Note:** This product is for research use only.