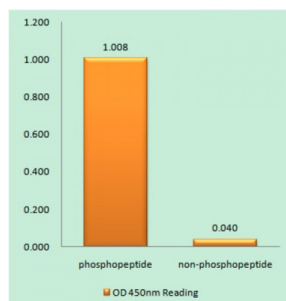


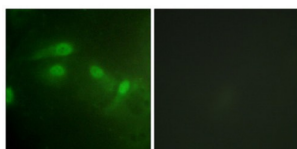
Abbexa Ltd, Innovation Centre, Cambridge Science Park, Cambridge, CB4 0EY, UK
Telephone: +44 (0) 1223 755950 - Fax: +44 (0) 1223 755951 - E-Mail: info@abbexa.com

Mdm2 p53 Binding Protein Homolog (MDM2) Antibody

Catalogue No.: abx012508



MDM2 (Phospho-Ser186+Ser188) antibody reacts with epitope-specific phosphopeptide and corresponding non-phosphopeptide. The absorbance readings at 450 nM are shown in the ELISA figure.



Immunofluorescence analysis of HeLa cells, using MDM2 (Phospho-Ser186+Ser188) antibody.

Rabbit polyclonal antibody against MDM2 protein. Immunogen region is Internal. Specificity is as follows for the reactive species: H:S186+S188.

Target:	MDM2
Reactivity:	Human
Host:	Rabbit
Clonality:	Polyclonal
Tested Applications:	ELISA, IF/ICC
Recommended dilutions:	IF/ICC: 1/100 - 1/500, ELISA: 1/20000. Optimal dilutions/concentrations should be determined by the end user.
Immunogen:	The antiserum was produced against synthesized phosphopeptide derived from human MDM2 around the phosphorylation site of serine 186 and serine 188 (H-K-SP-D-SP-I-S).
Purification:	Purified from rabbit antiserum by affinity chromatography using epitope-specific immunogen.
Form:	Liquid
Isotype:	IgG

Abbexa Ltd, Innovation Centre, Cambridge Science Park, Cambridge, CB4 0EY, UK
Telephone: +44 (0) 1223 755950 - Fax: +44 (0) 1223 755951 - E-Mail: info@abbexa.com

Conjugation: Unconjugated

Storage: Aliquot and store at -20 °C. Avoid repeated freeze/thaw cycles.

Swiss Prot: [Q00987](#)

Enzyme Commission Number: EC 6.3.2.-

Buffer: PBS (without Mg^{2+} and Ca^{2+}), pH 7.4, 150 mM NaCl, 0.02% sodium azide, 50% glycerol.

Note: This product is for research use only.