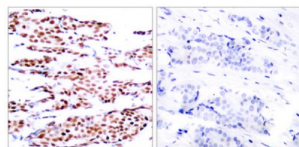


Abbexa Ltd, Innovation Centre, Cambridge Science Park, Cambridge, CB4 0EY, UK
Telephone: +44 (0) 1223 755950 - Fax: +44 (0) 1223 755951 - E-Mail: info@abbexa.com

Jun B Proto-Oncogene (JUNB) Antibody

Catalogue No.: abx012549



Immunohistochemical analysis of paraffin-embedded breast carcinoma. Left: Using JunB (Phospho-Ser79) Antibody; Right: The same antibody preincubated with synthesized phosphopeptide.

Rabbit polyclonal antibody against JunB protein. Immunogen region is Internal. Specificity is as follows for the reactive species: H:S79, M:S79, R:S79.

Target:	JunB
Reactivity:	Human, Mouse, Rat
Host:	Rabbit
Clonality:	Polyclonal
Tested Applications:	ELISA, IHC, IP
Recommended dilutions:	IHC: 1/50 - 1/100, ELISA: 1/20000. Optimal dilutions/concentrations should be determined by the end user.
Immunogen:	The antiserum was produced against synthesized phosphopeptide derived from human JunB around the phosphorylation site of Serine 79.
Purification:	Purified from rabbit antiserum by affinity chromatography using epitope-specific immunogen.
Form:	Liquid
Isotype:	IgG
Conjugation:	Unconjugated
Storage:	Aliquot and store at -20 °C. Avoid repeated freeze/thaw cycles.
Swiss Prot:	P17275
Buffer:	PBS (without Mg ²⁺ and Ca ²⁺), pH 7.4, 150 mM NaCl, 0.02% sodium azide, 50% glycerol.

Note: This product is for research use only.