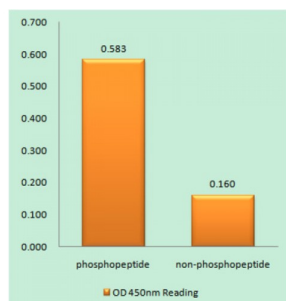


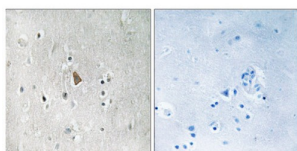
Abbexa Ltd, Innovation Centre, Cambridge Science Park, Cambridge, CB4 0EY, UK
Telephone: +44 (0) 1223 755950 - Fax: +44 (0) 1223 755951 - E-Mail: info@abbexa.com

Insulin Like Growth Factor 1 Receptor (IGF1R) (Phospho-Tyr1346) Antibody

Catalogue No.: abx012580



Insulin Like Growth Factor 1 Receptor (IGF1R) (Phospho-Tyr1346) antibody reacts with epitope-specific phosphopeptide and corresponding non-phosphopeptide. The absorbance readings at 450 nm are shown in the ELISA figure.



Immunohistochemistry analysis of paraffin-embedded human brain tissue, using Insulin Like Growth Factor 1 Receptor (IGF1R) (Phospho-Tyr1346) antibody.

Rabbit polyclonal antibody against Insulin Like Growth Factor 1 Receptor (IGF1R) protein. Immunogen region is C-terminal. Specificity is as follows for the reactive species: H:Y1346, M:Y1352, R:Y1349.

Target: Insulin Like Growth Factor 1 Receptor (IGF1R)

Reactivity: Human, Mouse, Rat

Host: Rabbit

Clonality: Polyclonal

Tested Applications: ELISA, IHC

Recommended dilutions: IHC: 1/50 - 1/100, ELISA: 1/40000. Optimal dilutions/concentrations should be determined by the end user.

Immunogen: The antiserum was produced against synthesized phosphopeptide derived from human IGF1R around the phosphorylation site of tyrosine 1346 (Q-P-YP-A-H).

Purification: Purified from rabbit antiserum by affinity chromatography using epitope-specific immunogen.

Form: Liquid

Isotype: IgG

Abbexa Ltd, Innovation Centre, Cambridge Science Park, Cambridge, CB4 0EY, UK
Telephone: +44 (0) 1223 755950 - Fax: +44 (0) 1223 755951 - E-Mail: info@abbexa.com

Conjugation: Unconjugated

Storage: Aliquot and store at -20 °C. Avoid repeated freeze/thaw cycles.

Swiss Prot: [P08069](#)

Buffer: PBS (without Mg^{2+} and Ca^{2+}), pH 7.4, 150 mM NaCl, 0.02% sodium azide, 50% glycerol.

Note: This product is for research use only.