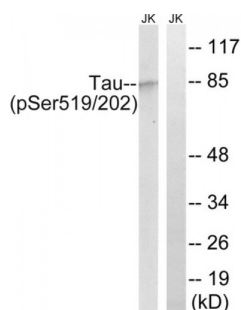


Abbexa Ltd, Innovation Centre, Cambridge Science Park, Cambridge, CB4 0EY, UK
Telephone: +44 (0) 1223 755950 - Fax: +44 (0) 1223 755951 - E-Mail: info@abbexa.com

Microtubule Associated Protein Tau / Tau Protein (MAPT) Antibody

Catalogue No.: abx012588



Western blot analysis of extracts from Jurkat cells, treated with H₂O₂ (100uM, 30mins), using Tau (Phospho-Ser519/202) antibody.

Rabbit polyclonal antibody against Tau protein. Immunogen region is Internal. Specificity is as follows for the reactive species: H:S519, M:S494, R:S513.

Target: Tau

Reactivity: Human, Mouse, Rat

Host: Rabbit

Clonality: Polyclonal

Tested Applications: ELISA, WB

Recommended dilutions: WB: 1/500 - 1/3000, ELISA: 1/1000. Optimal dilutions/concentrations should be determined by the end user.

Immunogen: The antiserum was produced against synthesized phosphopeptide derived from human Tau around the phosphorylation site of serine 519 (P-G-SP-P-G).

Purification: Purified from rabbit antiserum by affinity chromatography using epitope-specific immunogen.

Form: Liquid

Isotype: IgG

Conjugation: Unconjugated

Storage: Aliquot and store at -20 °C. Avoid repeated freeze/thaw cycles.

Swiss Prot: [P10636](#)

Buffer: PBS (without Mg²⁺ and Ca²⁺), pH 7.4, 150 mM NaCl, 0.02% sodium azide, 50% glycerol.

Note: This product is for research use only.