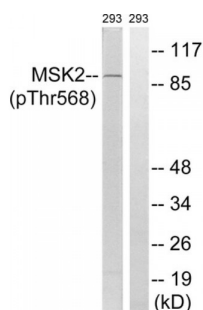


Abbexa Ltd, Innovation Centre, Cambridge Science Park, Cambridge, CB4 0EY, UK
Telephone: +44 (0) 1223 755950 - Fax: +44 (0) 1223 755951 - E-Mail: info@abbexa.com

Ribosomal Protein S6 Kinase Alpha-4 (RPS6KA4) Antibody

Catalogue No.: abx012616



Western blot analysis of extracts from 293 cells, treated with H₂O₂ (100uM, 15mins), using MSK2 (Phospho-Thr568) antibody.

Rabbit polyclonal antibody against MSK2 protein. Immunogen region is Internal. Specificity is as follows for the reactive species:
H:T568, M:T568.

| | |
|----------------------------------|--|
| Target: | MSK2 |
| Reactivity: | Human, Mouse |
| Host: | Rabbit |
| Clonality: | Polyclonal |
| Tested Applications: | ELISA, WB |
| Recommended dilutions: | ELISA: 1/5000, WB: 1/500 - 1/3000. Optimal dilutions/concentrations should be determined by the end user. |
| Immunogen: | The antiserum was produced against synthesized phosphopeptide derived from human MSK2 around the phosphorylation site of threonine 568 (M-Q-TP-P-C). |
| Purification: | Purified from rabbit antiserum by affinity chromatography using epitope-specific immunogen. |
| Form: | Liquid |
| Isotype: | IgG |
| Conjugation: | Unconjugated |
| Storage: | Aliquot and store at -20 °C. Avoid repeated freeze/thaw cycles. |
| Swiss Prot: | O75676 |
| Enzyme Commission Number: | EC 2.7.11.1 |

Abbexa Ltd, Innovation Centre, Cambridge Science Park, Cambridge, CB4 0EY, UK
Telephone: +44 (0) 1223 755950 - Fax: +44 (0) 1223 755951 - E-Mail: info@abbexa.com

Buffer: PBS (without Mg^{2+} and Ca^{2+}), pH 7.4, 150 mM NaCl, 0.02% sodium azide, 50% glycerol.

Note: This product is for research use only.