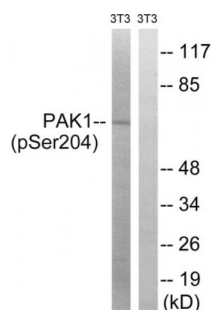


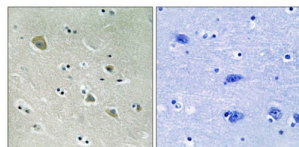
Abbexa Ltd, Innovation Centre, Cambridge Science Park, Cambridge, CB4 0EY, UK
Telephone: +44 (0) 1223 755950 - Fax: +44 (0) 1223 755951 - E-Mail: info@abbexa.com

P21 Protein Activated Kinase 1 (PAK1) Antibody

Catalogue No.: abx012620



Western blot analysis of extracts from 3T3 cells, treated with UV (15mins), using PAK1 (Phospho-Ser204) antibody.



Immunohistochemistry analysis of paraffin-embedded human brain tissue using PAK1 (Phospho-Ser204) antibody.

Rabbit polyclonal antibody against PAK1 protein. Immunogen region is Internal. Specificity is as follows for the reactive species:
H:S204, M:S204, R:S203.

Target:	PAK1
Reactivity:	Human, Mouse, Rat
Host:	Rabbit
Clonality:	Polyclonal
Tested Applications:	ELISA, WB, IHC
Recommended dilutions:	WB: 1/500 - 1/3000, IHC: 1/50 - 1/100, ELISA: 1/1000. Optimal dilutions/concentrations should be determined by the end user.
Immunogen:	The antiserum was produced against synthesized phosphopeptide derived from human PAK1 around the phosphorylation site of serine 204 (T-R-SP-V-I).
Purification:	Purified from rabbit antiserum by affinity chromatography using epitope-specific immunogen.
Form:	Liquid
Isotype:	IgG

Abbexa Ltd, Innovation Centre, Cambridge Science Park, Cambridge, CB4 0EY, UK
Telephone: +44 (0) 1223 755950 - Fax: +44 (0) 1223 755951 - E-Mail: info@abbexa.com

Conjugation: Unconjugated

Storage: Aliquot and store at -20 °C. Avoid repeated freeze/thaw cycles.

Swiss Prot: [Q13153](#)

Enzyme Commission Number: EC 2.7.11.1

Buffer: PBS (without Mg^{2+} and Ca^{2+}), pH 7.4, 150 mM NaCl, 0.02% sodium azide, 50% glycerol.

Note: This product is for research use only.