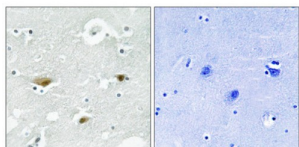


Abbexa Ltd, Innovation Centre, Cambridge Science Park, Cambridge, CB4 0EY, UK
Telephone: +44 (0) 1223 755950 - Fax: +44 (0) 1223 755951 - E-Mail: info@abbexa.com

STK39 (Phospho-Ser325) Antibody

Catalogue No.: abx012628



Immunohistochemistry analysis of paraffin-embedded human brain tissue using STK39 (Phospho-Ser325) antibody.

Rabbit polyclonal antibody against STK39 protein. Immunogen region is Internal. Specificity is as follows for the reactive species: H:S325, M:S335, R:S332.

Target:	STK39
Reactivity:	Human, Mouse, Rat
Host:	Rabbit
Clonality:	Polyclonal
Tested Applications:	ELISA, IHC
Recommended dilutions:	IHC: 1/50 - 1/100, ELISA: 1/1000. Optimal dilutions/concentrations should be determined by the end user.
Immunogen:	The antiserum was produced against synthesized phosphopeptide derived from human STK39 around the phosphorylation site of serine 325 (D-P-SP-K-R).
Purification:	Purified from rabbit antiserum by affinity chromatography using epitope-specific immunogen.
Form:	Liquid
Isotype:	IgG
Conjugation:	Unconjugated
Storage:	Aliquot and store at -20 °C. Avoid repeated freeze/thaw cycles.
Swiss Prot:	Q9UEW8
Enzyme Commission Number:	EC 2.7.11.1

Abbexa Ltd, Innovation Centre, Cambridge Science Park, Cambridge, CB4 0EY, UK
Telephone: +44 (0) 1223 755950 - Fax: +44 (0) 1223 755951 - E-Mail: info@abbexa.com

Buffer: PBS (without Mg^{2+} and Ca^{2+}), pH 7.4, 150 mM NaCl, 0.02% sodium azide, 50% glycerol.

Note: This product is for research use only.