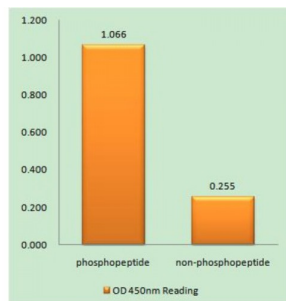


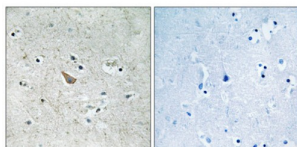
Abbexa Ltd, Innovation Centre, Cambridge Science Park, Cambridge, CB4 0EY, UK
Telephone: +44 (0) 1223 755950 - Fax: +44 (0) 1223 755951 - E-Mail: info@abbexa.com

Ephrin B1 / B2 (Phospho-Tyr329) Antibody

Catalogue No.: abx012642



Ephrin B1/B2 (Phospho-Tyr329) antibody reacts with epitope-specific phosphopeptide and corresponding non-phosphopeptide. The absorbance readings at 450 nM are shown in the ELISA figure.



Immunohistochemistry analysis of paraffin-embedded human brain tissue using Ephrin B1/B2 (Phospho-Tyr329) antibody.

Rabbit polyclonal antibody against Ephrin B1/B2 protein. Immunogen region is C-terminal. Specificity is as follows for the reactive species: H:Y329/316, M:Y328/319, R:Y328/-.

Target: Ephrin B1/B2

Reactivity: Human, Mouse, Rat

Host: Rabbit

Clonality: Polyclonal

Tested Applications: ELISA, IHC

Recommended dilutions: IHC: 1/50 - 1/100, ELISA: 1/10000. Optimal dilutions/concentrations should be determined by the end user.

Immunogen: The antiserum was produced against synthesized phosphopeptide derived from human Ephrin B1/B2 around the phosphorylation site of tyrosine 329 (P-V-YP-I-V).

Purification: Purified from rabbit antiserum by affinity chromatography using epitope-specific immunogen.

Form: Liquid

Isotype: IgG

Abbexa Ltd, Innovation Centre, Cambridge Science Park, Cambridge, CB4 0EY, UK
Telephone: +44 (0) 1223 755950 - Fax: +44 (0) 1223 755951 - E-Mail: info@abbexa.com

Conjugation: Unconjugated

Storage: Aliquot and store at -20 °C. Avoid repeated freeze/thaw cycles.

Swiss Prot: [P98172](#) [P52799](#)

Buffer: PBS (without Mg^{2+} and Ca^{2+}), pH 7.4, 150 mM NaCl, 0.02% sodium azide, 50% glycerol.

Note: This product is for research use only.