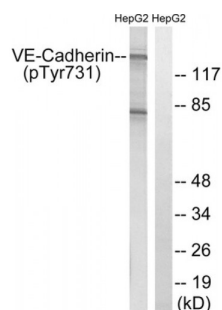


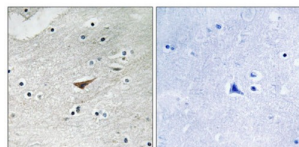
Abbexa Ltd, Innovation Centre, Cambridge Science Park, Cambridge, CB4 0EY, UK
Telephone: +44 (0) 1223 755950 - Fax: +44 (0) 1223 755951 - E-Mail: info@abbexa.com

VE-Cadherin (Phospho-Tyr731) Antibody

Catalogue No.: abx012655



Western blot analysis of extracts from HepG2 cells, treated with Na₃VO₄ (0.3mM, 40mins), using VE-Cadherin (Phospho-Tyr731) antibody.



Immunohistochemistry analysis of paraffin-embedded human brain tissue using VE-Cadherin (Phospho-Tyr731) antibody.

Rabbit polyclonal antibody against VE-Cadherin protein. Immunogen region is C-terminal. Specificity is as follows for the reactive species: H:Y731, M:Y731.

Target:	VE-Cadherin
Reactivity:	Human, Mouse
Host:	Rabbit
Clonality:	Polyclonal
Tested Applications:	ELISA, WB, IHC

Recommended dilutions: WB: 1/500 - 1/3000, IHC: 1/50 - 1/100, ELISA: 1/20000. Optimal dilutions/concentrations should be determined by the end user.

Immunogen: The antiserum was produced against synthesized phosphopeptide derived from human VE-Cadherin around the phosphorylation site of tyrosine 731 (H-I-YP-G-Y).

Purification: Purified from rabbit antiserum by affinity chromatography using epitope-specific immunogen.

Form: Liquid

Isotype: IgG

Abbexa Ltd, Innovation Centre, Cambridge Science Park, Cambridge, CB4 0EY, UK
Telephone: +44 (0) 1223 755950 - Fax: +44 (0) 1223 755951 - E-Mail: info@abbexa.com

Conjugation: Unconjugated

Storage: Aliquot and store at -20 °C. Avoid repeated freeze/thaw cycles.

Swiss Prot: [P33151](#)

Buffer: PBS (without Mg^{2+} and Ca^{2+}), pH 7.4, 150 mM NaCl, 0.02% sodium azide, 50% glycerol.

Note: This product is for research use only.